

2023
WATCHES



VICTORINOX

2023
WATCHES



10 JOURNEY 1884



18 I.N.O.X.



36 FIELDFORCE



50 ALLIANCE



60 MAVERICK



68 AIRBOSS



92 TECHNICAL SPECIFICATIONS

10 JOURNEY 1884

- 12 Journey 1884 (Quartz)
- 16 Journey 1884 (Automatic)

18 I.N.O.X.

- 20 I.N.O.X. (Quartz chrono steel)
- 22 I.N.O.X. (Quartz chrono carbon/titanium)
- 24 I.N.O.X. (Quartz chrono carbon)
- 26 I.N.O.X.
- 30 I.N.O.X. MECHANICAL
- 32 I.N.O.X. V

36 FIELDFORCE

- 38 FIELDFORCE
- 42 FIELDFORCE CLASSIC
- 46 FIELDFORCE SPORT

50 ALLIANCE

- 52 ALLIANCE
- 56 ALLIANCE XS

60 MAVERICK

- 62 MAVERICK
- 66 MAVERICK SMALL

68 AIRBOSS

- 70 AIRBOSS

92 TECHNICAL SPECIFICATIONS

- 92 TECHNICAL SPECIFICATIONS

- 5 EDITORIAL
- 6 HISTORY
- 8 SWISS MADE
- 72 STRAPS AND BRACELETS
- 74 STRAPS
- 78 5 YEAR WARRANTY +
- 80 PRODUCT TESTS
- 83 CUSTOMER SERVICE AND MAINTENANCE SERVICES
- 84 WATCH CARE TIPS
- 88 COMPONENTS AND MATERIALS
- 89 MOVEMENTS
- 90 CORPORATE BUSINESS



FOR URBAN & OUTDOOR ADVENTURES QUALITY, DURABILITY, STYLE

At Victorinox, we are engineering an adventure, taking inspiration from our iconic Swiss Army Knife, our industrial roots and Switzerland's great outdoors. We highly value the excellence of Swiss craftsmanship, as well as the impressive expertise of our more than 2,000 employees worldwide.

Each Victorinox premium watch is developed and manufactured in our own factory in Delémont, Switzerland. Thanks to high-quality components and materials, and in compliance with strict testing standards, we provide our products with durability and an outstanding 5 Year Warranty +.

Limited edition watches and selected timepieces come in specially-designed packaging that, in different variations, houses both the watch and a matching pocket knife – a distinctive set only our brand can offer.

The principles by which we do business are as relevant today as they were in 1897 when our company founder, Karl Elsener, developed the "Original Swiss Army Knife": functionality, innovation, iconic design and uncompromising quality. Our continued commitment to these principles has allowed us to develop products that are not only extraordinary in design and quality, but also in their ability to serve as reliable companions for life's adventures, both great and small.



Carl Elsener
CEO Victorinox

HISTORY



First Cutlery Workshop



Founder Karl Elsener



Mother Victoria



Carl Elsener, Chief Executive Officer

- 1884 Karl Elsener I opens a knife cutler's workshop in Ibach-Schwyz. His mother Victoria actively supports him in his endeavors.
- 1891 Karl Elsener I establishes the Association of Swiss Master Cutlers and delivers the first major supply of soldier's knives to the Swiss Army.
- 1897 The "Original Swiss Officer's and Sports Knife" is patented. It is known around the world today as the "Original Swiss Army Knife".
- 1909 In memoriam of his mother, Karl Elsener I chooses her first name Victoria as the brand name and registers the emblem with the cross and shield as a trademark. Today it is a registered trademark in over 120 countries.
- 1921 The invention of stainless steel (Inox) is a highly significant development for the cutlery industry. The combination of the two words "Inox" and "Victoria" results in today's company and brand name – Victorinox.
- 1931 Carl Elsener II introduces automation. In 1931, Brown Boveri is commissioned to set up the world's first all-electric hardening plant in Ibach. This guarantees that all knives are of a consistent high quality.
- 1945 US soldiers stationed in Europe after World War Two buy it in large quantities and it is a popular souvenir to take home.
- 1950 Carl Elsener III takes over the company management.
- 1977 The Original Swiss Army Knife becomes an exhibit for design at the Museum of Modern Art in New York.
- 1979 Transformation of sole proprietorship "Messerfabrik Karl Elsener" into the family-owned company "Victorinox AG".
- 1984 The company doubles its manufacturing and office space.
- 1989 Market entry for "Watches" under its Swiss Army brand in North America with its former U.S. sales partner.
- 1993 Opening of the first sales subsidiary in Japan.
- 1994 Establishment of Carl and Elise Elsener Gut Foundation with the mission to support national and international charitable projects.
- 1999 Market entry for "Travel Gear" with the American TRG Group as licensee.
- 2000 Establishment of the Victorinox Foundation which holds 90 % of the share capital of Victorinox AG. The remaining 10 % belong to the non-profit Carl and Elise Elsener-Gut Foundation.
- 2001 Launch of a clothing line in the U.S. and opening of the first Victorinox store in Soho, New York.
- 2005 Acquisition of the long-standing Swiss knife and watch manufacturer Wenger SA in Delémont. Wenger remains an independently operating subsidiary of Victorinox.



Nenad Mlinarevic, Swiss Chef and brand ambassador for household and professional knives



Watches since 1989



Travel Gear since 1999



Fragrances since 2007



2022: 125 Years SAK Anniversary

- 2007** Carl Elsener IV takes over the company management and further expands Victorinox as a global multi-product brand.
Establishment of Victorinox Swiss Army Fragrance AG.
- 2008** Opening of the first European Victorinox flagship store in London.
- 2011** Opening of the Swiss Knife Valley Visitor Center in Brunnen, Switzerland.
- 2013** Integration of the Wenger knife business into the Victorinox brand.
- 2014** Acquisition of the travel gear business from previous licensee and establishment of the new business unit Victorinox Travel Gear AG.
Opening of a store at a prime location in the city center of Zurich.
- 2016** Construction of the Watch Competence Center in Delémont, Switzerland.
- 2017** Discontinuation of Apparel to focus on the core product categories. Production of 500-millionth "Original Swiss Army Knife".
- 2020** Opening of the new distribution center in Seewen, Switzerland.
Acquisition of Zena Swiss AG, traditional Swiss manufacturer of the economy peeler.
Opening of first European Victorinox Franchise Store in Vienna
- 2022** 125th Anniversary of the "Original Swiss Officer's and Sports Knife"

SWISS MADE

Victorinox is an authentic Swiss brand with a strong history and heritage. The Swiss place great value on practicality; they take pride in innovation, quality and expertise.

We are no different. We ourselves want authentic, high-quality goods so that is what we make. If we need new ideas to get there we innovate, we collaborate until we have them. We do the job right and finish it properly, so we can take pride in our work, so it speaks for itself.

Located in the Swiss Jura, the Victorinox Watch Competence Center engineers, manufactures and assembles watches and watch components. The Center produces for Victorinox's own brands – Victorinox and Wenger – as well as for selected clients. For more than 130 years Victorinox has been developing its expertise in stainless steel, also known as inox steel, constantly improving product quality, process efficiency and cost effectiveness.

We make sure our products are reliable so that consumers can trust they are getting exactly what they want. For the office, the kitchen, the long-planned trip or the hike all the way up a mountain. Swissness and the active lifestyle of Swiss people are included in all products, so that customers will feel confident they are ready to face every day's adventure.



VALUES OF AN AUTHENTIC SWISS BRAND

We make products the way we would like to have them ourselves. This means in outstanding Swiss quality, with solution-oriented functionality. We believe in innovation for smart, creative and contemporary products and services. And our no-frills iconic design is based on simple, distinctive and clean lines. Our Brand Values are defined by our promise to our customers, which describes how they will benefit from our products.

QUALITY

is poured in every Victorinox Watch by the use of high-grade materials, rigorous quality testing, engineering and production in its own factory in Switzerland. And of course, all watches are Swiss Made.

FUNCTIONALITY

is part of every Victorinox Watch in order to support the daily life adventure of its wearer as for example enhanced day and night readability on every watch.

INNOVATION

is brought to Victorinox Watches amongst other by using innovative materials like carbon-composite for the case, genuine wood or American-made paracord for the straps.

ICONIC DESIGN

is translated to Victorinox Watches by using the roots of the brand, the Swiss Army Knife, as design inspiration like for example a SAK shaped counter weigh for the second hand.





JOURNEY 1884

EMBARK ON A JOURNEY OF DISCOVERY

- ISO shock- and 200 m water-resistance (all models)
- ISO norm antimagnetic protection (quartz mvmt)
- Versatile tool-free changeable strap



Inspired by Switzerland's love of hiking, the Journey 1884 perfectly blends the spirit of the outdoors with its engineering DNA. The Swiss Army Knife-influenced counterweight and the engraved material code reflect its industrial heritage, which is underscored by the foundation date. Antishock and antimagnetic resistance ensure accuracy, and the easy-change strap adds versatility to its credentials list. High quality materials, clever design detailing and innovative functions make this an essential companion on life's big adventure.

JOURNEY 1884

(QUARTZ)

PRODUCT TECHNICAL SPECIFICATION

CASE

- Ø 43 mm
- Crystal: sapphire
- Crystal specification: triple coated and anti-reflective
- Water resistant to: 20 ATM/200 M/660 FT
- Screw-in caseback
- Screw-down crown

DIAL

- Luminescent hands
- Luminescent markers
- Date
- Applied indexes and numerals



PRODUCT KEY FOCUS POINTS



ISO certified magnetism protection and anti-shock resistance



Iconic bezel cut with Victorinox 1884 foundation year marking



Vertical brushed case with engraved industrial material code



Swiss made Super-LumiNova® on hands, numbers, indexes and dot on bezel



Tool-free changeable straps and bracelets

JOURNEY 1884

Ø 43 mm

NEW

MOVEMENT

- Analog quartz movement
- Ronda 715

SPECIFIC FEATURES

- Swiss made quartz movement with EOL function and hand design inspired by Swiss hiking signs
- Unidirectional rotating bezel with matte aluminum inlay, and stainless steel (316L) case, manufactured in-house
- Tool-free changeable rubber strap with colored breathing pad and stainless steel pin buckle

DETAILS

- Straps & bracelets: See page 74
- Movements: See page 89
- Technical specifications: See page 92



241975

JOURNEY 1884

Ø 43 mm

NEW

MOVEMENT

- Analog quartz movement
- Ronda 715

SPECIFIC FEATURES

- Swiss made quartz movement with EOL function and hand design inspired by Swiss hiking signs
- Unidirectional rotating bezel with matte aluminum inlay, and stainless steel (316L) case, manufactured in-house
- Premium tool-free changeable stainless steel bracelet with butterfly buckle and security clasp

DETAILS

- Straps & bracelets: See page 74
- Movements: See page 89
- Technical specifications: See page 92



241978

NEW



242009

JOURNEY 1884

Ø 43 mm

NEW

MOVEMENT

- Analog quartz movement
- Ronda 715

SPECIFIC FEATURES

- Swiss made quartz movement with EOL function and hand design inspired by Swiss hiking signs
- Unidirectional rotating bezel with matte aluminum inlay, and stainless steel (316L) case, manufactured in-house
- Tool-free changeable genuine leather strap with stainless steel pin buckle
- Includes additional strap and accessories wallet

DETAILS

- Straps & bracelets: See page 74
- Movements: See page 89
- Technical specifications: See page 92



241976.1



JOURNEY 1884

JOURNEY 1884

Ø 43 mm

NEW

MOVEMENT

- Analog quartz movement
- Ronda 715

SPECIFIC FEATURES

- Swiss made quartz movement with EOL function and hand design inspired by Swiss hiking signs
- Unidirectional rotating bezel with matte aluminum inlay, and stainless steel (316L) case, manufactured in-house, black PVD
- Tool-free changeable rubber strap with colored breathing pad and stainless steel pin buckle, black PVD

DETAILS

- Straps & bracelets: See page 74
- Movements: See page 89
- Technical specifications: See page 92



241982

JOURNEY 1884

Ø 43 mm

NEW

MOVEMENT

- Analog quartz movement
- Ronda 715

SPECIFIC FEATURES

- Swiss made quartz movement with EOL function and a hand design inspired by Swiss hiking signs
- Unidirectional rotating gold (PVD) bezel with shimmering crystal inlay, and stainless steel (316L) case, manufactured in-house
- Tool-free changeable rubber strap with colored breathing pad and stainless steel pin buckle

DETAILS

- Straps & bracelets: See page 74
- Movements: See page 89
- Technical specifications: See page 92



NEW

Available
2nd half
2023
242013



Available
2nd half
2023
242014

JOURNEY 1884

Ø 43 mm

NEW

MOVEMENT

- Analog quartz movement
- Ronda 715

SPECIFIC FEATURES

- Swiss made quartz movement with EOL function and a hand design inspired by Swiss hiking signs
- Unidirectional rotating gold (PVD) bezel with shimmering crystal inlay, and stainless steel (316L) case, manufactured in-house
- Premium tool-free changeable stainless steel bracelet with butterfly buckle and security clasp

DETAILS

- Straps & bracelets: See page 74
- Movements: See page 89
- Technical specifications: See page 92



Available
2nd half
2023
242012

JOURNEY 1884 LIMITED EDITION

Ø 43 mm

NEW

MOVEMENT

- Analog quartz movement
- Ronda 715

SPECIFIC FEATURES

- Swiss made quartz movement with EOL function and a hand design inspired by Swiss hiking signs
- Unidirectional rotating black (PVD) bezel with matte aluminum inlay and stainless steel (316L) case, manufactured in-house
- Premium tool-free changeable red paracord strap with black PVD buckles
- Limited to 1,884 pieces, with individual numbering on watch and knife and additional rubber strap and accessories wallet

DETAILS

- Straps & bracelets: See page 74
- Movements: See page 89
- Technical specifications: See page 92



Available
2nd half
2023
242016.1

JOURNEY 1884

(AUTOMATIC)

PRODUCT TECHNICAL SPECIFICATION

CASE

- Ø 43 mm
- Crystal: sapphire
- Crystal specification: triple coated and anti-reflective
- Water resistant to: 20 ATM/200 M/660 FT
- See-through caseback
- Screw-in caseback

DIAL

- Luminescent hands
- Luminescent markers
- Date
- Applied indexes and numerals



PRODUCT KEY FOCUS POINTS



ISO certified shock resistance



Iconic bezel cut with Victorinox 1884 foundation year marking



Vertical brushed case with engraved industrial material code



Swiss made Super-Lumi-Nova® on hands, numbers, indexes and dot on bezel



Exhibition caseback with iconic Swiss Army Knife silhouette

JOURNEY 1884

Ø 43 mm

NEW

MOVEMENT

- Mechanical self-winding movement
- Sellita SW 200-1

SPECIFIC FEATURES

- Swiss Made automatic movement with 38 hours power reserve, hand design and yellow detailing inspired by Swiss hiking sign
- Unidirectional rotating bezel with scratch-resistant ceramic inlay, stainless steel (316L) case, manufactured in-house
- Premium tool-free changeable stainless steel bracelet with butterfly buckle and security clasp

DETAILS

- Straps & bracelets: See page 74
- Movements: See page 89
- Technical specifications: See page 92



241981

NEW



242010

NEW



Available
2nd half
2023
242015

JOURNEY 1884

Ø 43 mm

NEW

MOVEMENT

- Mechanical self-winding movement
- Sellita SW 200-1

SPECIFIC FEATURES

- Swiss Made automatic movement with 38 hours power reserve, hand design and yellow detailing inspired by Swiss hiking sign
- Unidirectional rotating bezel with scratch-resistant ceramic inlay, stainless steel (316L) case, manufactured in-house
- Tool-free changeable wood strap with user-friendly push-button deployment clasp
- Includes additional strap and accessories wallet

DETAILS

- Straps & bracelets: See page 74
- Movements: See page 89
- Technical specifications: See page 92



241980.1





I.N.O.X. STRONG AND RESILIENT ADVENTURE COMPANIONS

- ISO shock- and water-resistance up to 200 m*
- ISO norm antimagnetic protection (Quartz models)*
- Tool-free changeable strap*



There's nothing like the energizing freedom of escaping city life and being immersed in the forest. The I.N.O.X. range harnesses the feelings of balance and regeneration that come from stepping off life's treadmill for a moment. Designed with carved shapes and strong geometries, this collection features the iconic signature bezel and both quartz and mechanical movements. The use of stainless steel reflects Victorinox's roots in industrial craftsmanship, next to innovative, performance-focused materials like titanium and carbon. Pieced together in perfect harmony and precision, it's a watch that effortlessly fuses strength and elegance.

** Applies to selected models launched before September 2023 and all models launched after.*

I.N.O.X.

(QUARTZ CHRONO STEEL)

PRODUCT TECHNICAL SPECIFICATION

CASE

- Ø 43 mm
- Crystal: sapphire
- Crystal specification: triple coated and anti-reflective
- Water resistant to: 20 ATM/200 M/660 FT
- Screw-in caseback
- Screw-down Crown

DIAL

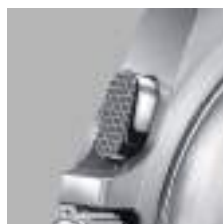
- Luminescent hands
- Luminescent markers
- Date & day of the week
- Applied indexes



PRODUCT KEY FOCUS POINTS



ISO certified magnetism protection and anti-shock resistance



Iconic Alox pattern on the pushers



Vertically brushed case with industrial material code engraving



Swiss made Super-Lumi-Nova® on hands and indexes



Tool-free changeable straps and bracelets

I.N.O.X.
Ø 43 mm

NEW

MOVEMENT

- Analog quartz movement
- Ronda 5040.E

SPECIFIC FEATURES

- Chronograph with evolved functions such as add and split, and windows for day and date
- Fixed bezel with anti-scratch coating, engraved tachymeter scale, stainless steel (316L) watch case; manufactured in-house
- Tool-free changeable rubber strap with colored breathing pad and stainless steel pin buckle

DETAILS

- Straps & bracelets: See page 74
- Movements: See page 89
- Technical specifications: See page 92



NEW

Available
2nd half
2023

241983



Available
2nd half
2023

241984

NEW



Available
2nd half
2023

241986

I.N.O.X.
Ø 43 mm

NEW

MOVEMENT

- Analog quartz movement
- Ronda 5040.E

SPECIFIC FEATURES

- Chronograph with evolved functions such as add and split, and windows for day and date
- Fixed bezel with anti-scratch coating, engraved tachymeter scale, stainless steel (316L) watch case; manufactured in-house
- Premium tool-free changeable stainless steel bracelet with butterfly buckle and security clasp

DETAILS

- Straps & bracelets: See page 74
- Movements: See page 89
- Technical specifications: See page 92



Available
2nd half
2023

241985

I.N.O.X.

(QUARTZ CHRONO CARBON/TITANIUM)

PRODUCT TECHNICAL SPECIFICATION

CASE

- Ø 43 mm
- Crystal: sapphire
- Crystal specification: triple coated and anti-reflective
- Water resistant to: 20 ATM/200 M/660 FT
- Screw-in caseback
- Screw-down Crown

DIAL

- Luminescent hands
- Luminescent markers
- Date & day of the week
- Applied indexes



PRODUCT KEY FOCUS POINTS



ISO certified magnetism protection and anti-shock resistance



Iconic Alox pattern on the black (PVD) titanium-pushers



Vertically brushed case with industrial material code engraving



Swiss made Super-Lumi-Nova® on hands and indexes



Tool-free changeable straps and bracelets

I.N.O.X.
Ø 43 mm

NEW

MOVEMENT

- Analog quartz
- Ronda 5040.E

SPECIFIC FEATURES

- Chronograph with evolved functions such as add and split, and windows for day and date
- Swiss made carbon composite bezel (fixed) with engraved tachymeter scale, and titanium case, manufactured in-house
- Tool-free changeable rubber strap with colored breathing pad and titanium pin buckle

DETAILS

- Straps & bracelets: See page 74
- Movements: See page 89
- Technical specifications: See page 92



Available
2nd half
2023

242011

I.N.O.X.
Ø 43 mm

NEW

MOVEMENT

- Analog quartz movement
- Ronda 5040.E

SPECIFIC FEATURES

- Chronograph with evolved functions such as add and split, and windows for day and date
- Swiss made carbon composite bezel (fixed) with engraved tachymeter scale, and titanium case, manufactured in-house
- Tool-free changeable wood strap with leather lining and titanium pin buckle
- Includes additional rubber strap and accessories wallet

DETAILS

- Straps & bracelets: See page 74
- Movements: See page 89
- Technical specifications: See page 92



Available
2nd half
2023

241988.1



I.N.O.X.

(QUARTZ CHRONO CARBON)

PRODUCT TECHNICAL SPECIFICATION

CASE

- Ø 43 mm
- Crystal: sapphire
- Crystal specification: triple coated and anti-reflective
- Water resistant to: 20 ATM/200 M/660 FT
- Screw-in caseback
- Screw-down Crown

DIAL

- Luminescent hands
- Luminescent markers
- Date & day of the week
- Applied indexes



PRODUCT KEY FOCUS POINTS



ISO certified magnetism protection and anti-shock resistance



Iconic Alox pattern on the black (PVD) titanium-pushers



Unique marbling effect of carbon fiber, with industrial material code engraving



Swiss Super-LumiNova® on hands & indexes



Tool free changeable paracord strap

I.N.O.X. CARBON

Ø 43 mm

NEW

MOVEMENT

- Analog quartz movement
- Ronda 5040.E

SPECIFIC FEATURES

- Chronograph with evolved functions such as add and split, and windows for day and date
- Carbon composite fixed bezel with engraved tachymeter scale; scratch-resistant carbon composite case; made in Switzerland
- Tool-free changeable paracord strap, black PVD stainless steel pin buckle and additional size extension
- Includes additional rubber strap and accessories wallet

DETAILS

- Straps & bracelets: See page 74
- Movements: See page 89
- Technical specifications: See page 92



Available
2nd half
2023

241989.1



I.N.O.X.

I.N.O.X.

PRODUCT TECHNICAL SPECIFICATION

CASE

- Ø 43 mm
- Crystal: sapphire
- Crystal specification: triple coated and anti-reflective
- Water resistant to: 20 ATM/200 M/660 FT
- Screw-in caseback
- Screw-down Crown

DIAL

- Luminescent hands
- Luminescent markers
- Date
- Monobloc



PRODUCT KEY FOCUS POINTS



The Super-LumiNova® technology enables effortless readability in the dark



Thick underset sapphire crystal



Oversized protected screw-down crown



Carbon case highly resistant to scratches*



Water resistant to 200m

* Depending on models

I.N.O.X. CARBON LE

Ø 43 mm

MOVEMENT

- Analog quartz
- Ronda 715

SPECIFIC FEATURES

- Unique lightweight carbon composite case is highly resistant to scratches
- Swiss made watch and Evolution 30 pocket knife; 1,500 piece limited edition set featuring glow-in-the-dark SuperLuminova® dial
- Camouflage design survival paracord strap, two additional straps (one military NATO, one black rubber) and protective compass bumper

DETAILS

- Straps & bracelets: See page 74
- Movements: See page 89
- Technical specifications: See page 92



241927.1

I.N.O.X. CARBON

Ø 43 mm

MOVEMENT

- Analog quartz
- Ronda 715

SPECIFIC FEATURES

- Withstands up to 130 extreme endurance homologation tests
- Unique space-tested carbon case that's highly resistant to scratches. Color matching innovative handwoven survival paracord strap with green tracers. The Super-LumiNova® technology enables effortless readability in the dark
- Delivered in bespoke packaging housing an additional rubber strap and bumper

DETAILS

- Straps & bracelets: See page 74
- Movements: See page 89
- Technical specifications: See page 92



241860



241859



I.N.O.X.

I.N.O.X.

∅ 43 mm

MOVEMENT

- Analog quartz
- Ronda 715

SPECIFIC FEATURES

- Withstands 130 extreme endurance homologation tests
- High grade Swiss Made stainless steel (316L) case. The genuine rubber strap can be worn in any situation and under any circumstance
- Delivered with a removable bumper to protect against scratches

DETAILS

- Straps & bracelets: See page 74
- Movements: See page 89
- Technical specifications: See page 92





I.N.O.X. MECHANICAL

PRODUCT TECHNICAL SPECIFICATION

CASE

- Ø 43 mm
- Crystal: sapphire
- Crystal specification: triple coated and anti-reflective
- Water resistant to: 20 ATM/200 M/660 FT
- See-through caseback
- Screw-in caseback
- Screw-down Crown

DIAL

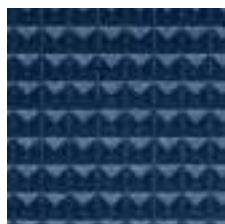
- Luminescent hands
- Luminescent markers
- Date
- Monobloc



PRODUCT KEY FOCUS POINTS



Swiss made automatic movement
See-through case back



Officer's Knife inspired guilloché monobloc dial



Innovative wood strap*



Bezel with anti-scratch coating



Water-resistant up to 200m

* Depending on models

I.N.O.X. MECHANICAL

Ø 43 mm

MOVEMENT

- Mechanical automatic
- Sellita SW 200-1

SPECIFIC FEATURES

- Swiss Made automatic movement Sellita SW 200-1 visible through the exhibition case back.
- High grade Swiss Made stainless steel (316L) case. Innovative wood strap.
- Delivered with a removable bumper to protect against scratches

DETAILS

- Straps & bracelets: See page 74
- Movements: See page 89
- Technical specifications: See page 92



241834

I.N.O.X. MECHANICAL

Ø 43 mm

MOVEMENT

- Mechanical automatic
- Sellita SW 200-1

SPECIFIC FEATURES

- Swiss Made automatic movement Sellita SW 200-1 visible through the exhibition case back.
- High grade Swiss Made stainless steel (316L) case. Most resilient stainless-steel bracelet ever conceived.
- Delivered with a removable bumper to protect against scratches

DETAILS

- Straps & bracelets: See page 74
- Movements: See page 89
- Technical specifications: See page 92



241835



241837

I.N.O.X. CARBON MECHANICAL

Ø 43 mm

MOVEMENT

- Mechanical automatic
- Sellita SW 200-1

SPECIFIC FEATURES

- Unique space-tested carbon composite case highly resistant to scratches
- Swiss made automatic movement Sellita SW200 with 38-hour power reserve, visible through the titanium exhibition case back
- Delivered in a special packaging housing an exclusive Spartan PS knife and black protective bumper

DETAILS

- Straps & bracelets: See page 74
- Movements: See page 89
- Technical specifications: See page 92



241866.1



I.N.O.X. V

PRODUCT TECHNICAL SPECIFICATION

CASE

- Ø 37 mm
- Crystal: sapphire
- Crystal specification: triple coated and anti-reflective
- Water resistant to: 10 ATM/100 M/330 FT
- Screw-in caseback

DIAL

- Luminescent hands
- Luminescent markers
- Applied indexes and numerals



PRODUCT KEY FOCUS POINTS



Thin ergonomic shaped case



Enhanced scratch resistance on bezel



Unscrewed crown to limit nail breakage



Super-LumiNova® for effortless readability in the dark



Water-resistant up to 100m

I.N.O.X. V
Ø 37 mm

MOVEMENT

- Analog quartz
- Ronda 715

SPECIFIC FEATURES

- Highly ergonomic and lightweight through expert horological engineering
- Super-soft paracord strap with new closing system
- Enhanced scratch resistance on bezel and unscrewed crown to limit nail breakage

DETAILS

- Straps & bracelets: See page 74
- Movements: See page 89
- Technical specifications: See page 92



241918



241920



241955



I.N.O.X. V
Ø 37 mm

MOVEMENT

- Analog quartz
- Ronda 715

SPECIFIC FEATURES

- Highly ergonomic and lightweight through expert horological engineering
- Resistant rubber strap with easy release bar system
- Enhanced scratch resistance on bezel and unscrewed crown to limit nail breakage

DETAILS

- Straps & bracelets: See page 74
- Movements: See page 89
- Technical specifications: See page 92



241919



241921



241954





FIELDFORCE

FUNCTIONAL AND ARMY-INSPIRED TIMEPIECES

- A sporty and masculine look for any occasion
- Super-LumiNova® ensures easy 24-hour readability
- Crown protection offers enhanced endurance



Blending iconic design with an innovative display technology, the FieldForce Collection is a force of its own. It's all about readability, with bold, distinct numerals and generously sized hands enhanced with Super-Luminova® for 24-hour, day-and-night clarity. Some models feature a GMT function that keeps track of dual time zones, while others offer high multifunctionality with chronograph and tachymeter functions. Every FieldForce piece exudes a confident, classic style, reflecting its distinguished Swiss Army Knife heritage.

FIELDFORCE

PRODUCT TECHNICAL SPECIFICATION

CASE

- Ø 42 mm
- Crystal: sapphire
- Crystal specification: triple coated and anti-reflective
- Water resistant to: 10 ATM/100 M/330 FT
- Screw-in caseback

DIAL

- Luminescent hands
- Luminescent markers
- Date
- Monobloc



PRODUCT KEY FOCUS POINTS



Day-Date display*



Aluminium bezel



Counter-weight inspired by the Swiss Army Knife



Super-LumiNova® for effortless readability in the dark



Protected crown

* Depending on models

FIELDFORCE

∅ 42 mm

MOVEMENT

- Analog quartz
- Ronda 517

SPECIFIC FEATURES

- Sporty, serious and masculine timepiece that thrives in any situation
- With Day-Date function
- Generously sized hands and numerals featuring Super-LumiNova® for easy day and night readability

DETAILS

- Straps & bracelets: See page 74
- Movements: See page 89
- Technical specifications: See page 92



FIELDFORCE

FIELDFORCE CHRONO

∅ 42 mm

MOVEMENT

- Analog quartz
- Ronda 5030.D

SPECIFIC FEATURES

- Sporty, serious and masculine timepiece that thrives in any situation
- With chronograph functions and tachymeter scale
- Generously sized hands and numerals featuring Super-LumiNova® for easy day and night readability

DETAILS

- Straps & bracelets: See page 74
- Movements: See page 89
- Technical specifications: See page 92



241852



241854



241855



241857





FIELDFORCE

FIELDFORCE CLASSIC

PRODUCT TECHNICAL SPECIFICATION

CASE

- ø 42 mm
- Crystal: sapphire
- Crystal specification: triple coated and anti-reflective
- Water resistant to: 10 ATM/100 M/330 FT
- Screw-in caseback

DIAL

- Luminescent hands
- Luminescent markers
- Date
- Applied indexes and numerals



PRODUCT KEY FOCUS POINTS



Sunray brushed dial and metallic numbers for a luxe touch



Deployment buckle*



Chronograph functions



Super-LumiNova® for effortless readability in the dark



Protected crown

* Depending on models

FIELDFORCE CLASSIC CHRONO

Ø 42 mm

MOVEMENT

- Analog quartz
- Ronda 5030.D

SPECIFIC FEATURES

- Brings a masculine, serious yet luxe feel
- With chronograph functions and tachymeter scale
- Generously sized hands, bold numerals and Super-LumiNova® for easy day and night-time readability

DETAILS

- Straps & bracelets: See page 74
- Movements: See page 89
- Technical specifications: See page 92



241899



241900



241901



241902



241903



241928



241929

FIELDFORCE CLASSIC GMT

∅ 42 mm

MOVEMENT

- Analog quartz
- Ronda 515.24H

SPECIFIC FEATURES

- Brings a masculine, serious yet luxe feel
- GMT function keeps track of two time zones simultaneously and independently
- Generously sized hands, bold numerals and Super-LumiNova® for easy day and night-time readability

DETAILS

- Straps & bracelets: See page 74
- Movements: See page 89
- Technical specifications: See page 92



241930



241931



FIELDFORCE SPORT

PRODUCT TECHNICAL SPECIFICATION

CASE

- Ø 42 mm
- Crystal: sapphire
- Crystal specification: triple coated and anti-reflective
- Water resistant to: 10 ATM/100 M/330 FT
- Screw-in caseback

DIAL

- Luminescent hands
- Luminescent markers
- Date
- Monobloc



PRODUCT KEY FOCUS POINTS



Matt Black PVD Treatment*



Tachymeter scale



Chronograph functions



Super-LumiNova® for effortless readability in the dark



Protected crown

* Depending on models

FIELDFORCE SPORT CHRONO

Ø 42 mm

MOVEMENT

- Analog quartz
- Ronda 5030.D

SPECIFIC FEATURES

- Swiss made watch with chronograph functions and tachymeter scale
- Generously sized hands and numerals featuring Super-LumiNova® for easy day and night readability
- Delivered in special packaging housing an exclusive Spartan PS knife

DETAILS

- Straps & bracelets: See page 74
- Movements: See page 89
- Technical specifications: See page 92



241926.1

FIELDFORCE SPORT GMT

Ø 42 mm

MOVEMENT

- Analog quartz
- Ronda 515.24H

SPECIFIC FEATURES

- Sporty, bold aesthetic finished with modern PVD gunmetal treatment and featuring colourful Swiss Army knife-shaped counterweight on the second hand
- GMT function keeps track of two time zones simultaneously and independently
- Generously sized hands, bold numerals and Super-LumiNova® for easy day and night-time readability

DETAILS

- Straps & bracelets: See page 74
- Movements: See page 89
- Technical specifications: See page 92



241897

FIELDFORCE SPORT CHRONO

∅ 42 mm

MOVEMENT

- Analog quartz
- Ronda 5030.D

SPECIFIC FEATURES

- Sporty, colorful timepiece for every occasion
- Swiss made watch with chronograph functions and tachymeter scale
- Easy 24-hour readability thanks to generously sized hands and numerals with SuperLuminova®

DETAILS

- Straps & bracelets: See page 74
- Movements: See page 89
- Technical specifications: See page 92



241889



241890



241891



241893





FIELDFORCE



ALLIANCE

CONFIDENCE AND SUBTLETY ACROSS THE LINE

- A classic and timeless companion
- Cases come in 28 mm up to 44 mm sizes
- Offers up to 100 m water resistance



The Alliance Collection is the strong, silent type, flying under the radar with quiet and complete confidence. This range fuses the very best of Victorinox design, technology and expertise, offering watches in a range of sizes and with traditional watch-making details such as pyramidal markers and models with automatic movement, or elegant, feminine models enhanced with glittering Swarovski crystals. Each piece in the collection is dynamic and decisive, making this the go-to choice for people who appreciate top quality, alluring timepieces.

ALLIANCE

PRODUCT TECHNICAL SPECIFICATION

CASE

- Ø 40 mm
- Crystal: sapphire
- Crystal specification: triple coated and anti-reflective
- Water resistant to: 10 ATM/100 M/330 FT
- Screw-in caseback

DIAL

- Luminescent hands
- Luminescent markers
- Date
- Applied indexes



PRODUCT KEY FOCUS POINTS



Enhanced wearer comfort



Quick spring release system on strap*



Date calendar



Super-LumiNova® for effortless readability in the dark



Polished pyramidal indexes

* Depending on models

ALLIANCE

Ø 40 mm

MOVEMENT

- Analog quartz
- Ronda 705

SPECIFIC FEATURES

- Timeless design and quality craftsmanship for all occasions and optimal comfort
- High-grade 316 L stainless steel case with premium leather strap and generously sized hands
- Undergoes rigorous homologation tests to support your daily lifestyle

DETAILS

- Straps & bracelets: See page 74
- Movements: See page 89
- Technical specifications: See page 92



241904



241905



241906



241907



241908

ALLIANCE

ALLIANCE

∅ 40 mm

MOVEMENT

- Analog quartz
- Ronda 705

SPECIFIC FEATURES

- Timeless design and quality craftsmanship for all occasions and optimal comfort
- High-grade 316 L stainless steel case with sleek steel strap and generously sized hands
- Undergoes rigorous homologation tests to support your daily lifestyle

DETAILS

- Straps & bracelets: See page 74
- Movements: See page 89
- Technical specifications: See page 92



241909



241910



241911



241912



241913

ALLIANCE

Ø 40 mm

MOVEMENT

- Analog quartz
- Ronda 705

SPECIFIC FEATURES

- Timeless design and quality craftsmanship for all occasions and optimal comfort
- High-grade 316 L stainless steel case with premium leather strap and generously sized hands
- Comes with Pioneer Alox Swiss Army Knife in beautiful gift box

DETAILS

- Straps & bracelets: See page 74
- Movements: See page 89
- Technical specifications: See page 92



241904.1



ALLIANCE

Ø 40 mm

MOVEMENT

- Analog quartz
- Ronda 705

SPECIFIC FEATURES

- Timeless design and quality craftsmanship for all occasions and optimal comfort
- High-grade 316 L stainless steel case with sleek steel strap and generously sized hands
- Comes with Pioneer Alox Swiss Army Knife in beautiful gift box

DETAILS

- Straps & bracelets: See page 74
- Movements: See page 89
- Technical specifications: See page 92



241910.1

ALLIANCE XS

PRODUCT TECHNICAL SPECIFICATION

CASE

- Ø 28 mm
- Crystal: sapphire
- Crystal specification: triple coated and anti-reflective
- Water resistant to: 10 ATM/100 M/330 FT
- Screw-in caseback

DIAL

- Luminescent hands
- Luminescent markers
- Applied indexes



PRODUCT KEY FOCUS POINTS



Bicolore strap*



Case: Ø 28 MM



Counter-weight inspired by the Swiss Army Knife



Swarovski crystals set on the dial*



Super-LumiNova® for effortless readability in the dark

* Depending on models

ALLIANCE XS

∅ 28 mm

MOVEMENT

- Analog quartz
- Ronda 773

SPECIFIC FEATURES

- Feminin and timeless design to be worn in any situation.
- With eleven glittering Swarovski crystals set on the dial
- Super Luminova on dots and hands for easy readability

DETAILS

- Straps & bracelets: See page 74
- Movements: See page 89
- Technical specifications: See page 92



241875



241877



241879

ALLIANCE XS

Ø 28 mm

MOVEMENT

- Analog quartz
- Ronda 773

SPECIFIC FEATURES

- Feminin and timeless design to be worn in any situation.
- Structured pearly dial
- Numerical indexes and Super Luminova on dots and hands for easy readability

DETAILS

- Straps & bracelets: See page 74
- Movements: See page 89
- Technical specifications: See page 92



241840

ALLIANCE XS

Ø 28 mm

MOVEMENT

- Analog quartz
- Ronda 773

SPECIFIC FEATURES

- Feminin and timeless design to be worn in any situation.
- Sunray brushed dial
- Super Luminova on dots and hands for easy readability

DETAILS

- Straps & bracelets: See page 74
- Movements: See page 89
- Technical specifications: See page 92



241839



241841



241842



ALLIANCE



MAVERICK

FANCY DIVING-INSPIRED TIMEPIECES

- Classy and precise diving-inspired wristwatch
- Features rotating bezel with count-up scale
- Crown protection offers enhanced durability



The Maverick Collection captures the adventurous spirit of the deep-sea diver, where pinpoint timing is a matter of life and death. These stylish watches feature a unidirectional bezel – a function developed for divers to record exact underwater times, and now a mark of the explorer and pioneer, calibrating everyday challenges and tasks. Above or below the waves, the technically precise and visually stunning Maverick watch delivers control and precision to navigate modern life, and is enhanced with sapphire crystal for optimal endurance.

MAVERICK

PRODUCT TECHNICAL SPECIFICATION

CASE

- Ø 43 mm
- Crystal: sapphire
- Crystal specification: triple coated and anti-reflective
- Water resistant to: 10 ATM/100 M/330 FT
- Screw-in caseback

DIAL

- Luminescent hands
- Luminescent markers*
- Date
- Applied indexes and numerals



PRODUCT KEY FOCUS POINTS



Unidirectional rotating bezel



Count-up scale



Crown protection & 100m water resistance



Military time



Date calendar

** Depending on models*

MAVERICK

∅ 43 mm

MOVEMENT

- Analog quartz
- Ronda 715

SPECIFIC FEATURES

- Swiss made diving style watch with unidirectional rotating bezel
- Antireflective sapphire crystal and 100 m water resistance
- Undergoes strict homologation tests to support your daily lifestyle

DETAILS

- Straps & bracelets: See page 74
- Movements: See page 89
- Technical specifications: See page 92



242007



242008



241950



241951



241934

MAVERICK

MAVERICK CHRONO

∅ 43 mm

MOVEMENT

- Analog quartz
- Ronda 5030.D

SPECIFIC FEATURES

- Swiss made diving style watch with unidirectional rotating bezel. Chronograph and tachymeter functions
- Antireflective sapphire crystal and 100 m water resistance
- Undergoes strict homologation tests to support your daily lifestyle

DETAILS

- Straps & bracelets: See page 74
- Movements: See page 89
- Technical specifications: See page 92



241946



241952



241797



241689



241693



241695



241791

MAVERICK CHRONO

Ø 43 mm

MOVEMENT

- Analog quartz
- Ronda 5030.D

SPECIFIC FEATURES

- Diving watch with unidirectional rotating bezel and count-up scale. Chronograph and tachymeter functions
- High grade Swiss Made stainless steel (316L) case
- Crown protection and 100m water resistance

DETAILS

- Straps & bracelets: See page 74
- Movements: See page 89
- Technical specifications: See page 92



241865



MAVERICK SMALL

PRODUCT TECHNICAL SPECIFICATION

CASE

- Ø 34 mm
- Crystal: sapphire
- Crystal specification: triple coated and anti-reflective
- Water resistant to: 10 ATM/100 M/330 FT
- Screw-in caseback

DIAL

- Luminescent markets
- Date
- Applied indexes and numerals



PRODUCT KEY FOCUS POINTS



Unidirectional rotating bezel



Count-up scale



Crown protection & 100m water resistance



Military time



Date calendar

MAVERICK SMALL

∅ 34 mm

MOVEMENT

- Analog quartz
- Ronda 705

SPECIFIC FEATURES

- Diving watch with unidirectional rotating bezel and count-up scale
- High grade Swiss Made stainless steel (316L) case
- Crown protection and 100m water resistance

DETAILS

- Straps & bracelets: See page 74
- Movements: See page 89
- Technical specifications: See page 92



241610



241701



AIRBOSS

BOLD AND DARING MECHANICAL TIMEKEEPERS

- Technical aviator look inspired by aeronauts
- Mechanical movements offer self-winding freedom
- See-through caseback shows mechanical workings



The Airboss Collection was created with reliability and precision as the main goal, and aeronautics in mind. Inspired by the aircraft carrier count-down commander whose job requires on-the-mark accuracy, this collection of mechanical watches blends classic charm with cutting edge design. Some models feature circular slide rules for easy time calculations that mark the beats of a busy, modern lifestyle. And with the exclusively Swiss-made automatic movement that works in harmony with arm motions, each piece creates a synergy between watch and wearer.

AIRBOSS

PRODUCT TECHNICAL SPECIFICATION

CASE

- Ø 42 mm
- Crystal: sapphire
- Crystal specification: triple coated and anti-reflective
- Water resistant to: 10 ATM/100 M/330 FT
- See-through caseback
- Screw-in caseback

DIAL

- Luminescent hands
- Luminescent markers
- Date
- Applied numerals



PRODUCT KEY FOCUS POINTS



Military time printed under the crystal



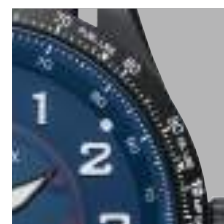
Swiss made automatic movement



Diamond-cut striations on the dial tracks



See-through case back



Circular slide rule

AIRBOSS MECHANICAL

∅ 42 mm

MOVEMENT

- Mechanical self-winding movement
- Sellita SW 200-1

SPECIFIC FEATURES

- Swiss made automatic movement Sellita SW200 visible through the translucent exhibition case back
- With 38-hour power reserve, circular slide rule and exclusive military time function
- Features Super-LumiNova technology for effortless readability in the dark

DETAILS

- Straps & bracelets: See page 74
- Movements: See page 89
- Technical specifications: See page 92





STRAPS AND BRACELETS

LEATHER

All Victorinox leather straps are specially cut, stitched and lined by expert craftsmen. Various tanning techniques provide different textures and feels for our cowhide or calfskin straps. We also ensure that none of the leather used in our straps is sourced from endangered species. It is always important to note that the colours and suppleness of leather are subject to change with time and exposure to external factors. Exposing it to daily showers or swims is not recommended. We recommend that customers who live a very active lifestyle, especially one involving frequent exposure to salt water and/or heavy perspiration, opt for a steel bracelet or rubber strap.

STAINLESS STEEL

The 316L stainless steel alloy used in Victorinox bracelets has strong antimagnetic properties and is optimized for toughness and corrosion resistance.

MILANESE MESH BRACELETS

Stainless steel Milanese mesh bracelets are flexible, thin and easy to adjust, enabling the owner to adapt the size of their own bracelet without the need for any specific tools.

GENUINE RUBBER

Victorinox uses genuine high-grade rubber for its straps, a natural and extremely comfortable material with a silky finish that is as resistant to ageing as silicone.



BALLISTIC NYLON

Some Victorinox models are equipped with ballistic nylon straps, which also features in our of most exclusive line of travel gear. It provides the ultimate in reliability and durability.

NATO INSPIRED STRAPS

NATO, or the North Atlantic Treaty Organization, has clear links to the military world. Our NATO-inspired straps are made from a single piece of textile woven from extraresistant nylon fibre and cotton.

PARACORD STRAPS

The paracord strap is original, innovative and unique. Hand-woven from genuine American-Made certified parachute cord (highly resistant, multistrand nylon cord), it is the ideal companion for every adventure and expedition. Paracord straps can be unwoven and used for as many purposes as the wearer can possibly imagine.

SBB (STRAPS & BRACELETS BASE)

Our easy-to-use SBB references are available in our Media Centre and are regularly updated. This practical database enables you to find the strap reference your customer needs quickly (metal bracelet, leather, rubber, paracord or any of our available straps) and look up compatible straps for every watch SKU launched since 2005. Information about how to download a digital version from our Media Centre can be provided.

STRAPS

I.N.O.X.



I.N.O.X. 241682.1



I.N.O.X. 241688.1



I.N.O.X. CARBON LE 241927.1



I.N.O.X. MECHANICAL 241835, 241837



I.N.O.X. MECHANICAL 241834



I.N.O.X. CARBON 241859



I.N.O.X. CARBON 241860



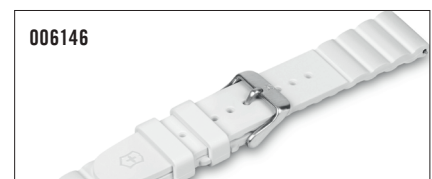
I.N.O.X. CARBON MECHANICAL 241866.1



I.N.O.X. V 241918



I.N.O.X. V 241919



I.N.O.X. V 241921



I.N.O.X. V 241920



I.N.O.X. V 241954



I.N.O.X. V 241955



I.N.O.X. 241983



I.N.O.X. 241984



I.N.O.X. 241985



006567

I.N.O.X.

241986



006632

I.N.O.X.

241988.1



006568

I.N.O.X.

242011



006571

I.N.O.X.

241989.1

JOURNEY 1884



006499

JOURNEY 1884

241975, 242013



006518

JOURNEY 1884

241976.1



006505

JOURNEY 1884

241978, 241981, 242009,
242010, 242012, 242015



006503

JOURNEY 1884

241982



006523

JOURNEY 1884

241980.1



006501

JOURNEY 1884

242014



006573

JOURNEY 1884

242016.1

FIELDFORCE



005939

FIELDFORCE
FIELDFORCE CHRONO

241846
241852



005943

FIELDFORCE CLASSIC CHRONO
FIELDFORCE
FIELDFORCE CHRONO

241899, 241901, 241930
241849, 241851
241855, 241857



005945

FIELDFORCE
FIELDFORCE CHRONO

241848
241854



006047

FIELDFORCE SPORT CHRONO

241890



006048

FIELDFORCE SPORT CHRONO

241893

STRAPS



006085
FIELDFORCE CLASSIC CHRONO 241902, 241903



006107
FIELDFORCE CLASSIC CHRONO 241900, 241931



006179
FIELDFORCE CLASSIC CHRONO 241928



006180
FIELDFORCE CLASSIC CHRONO 241929



006214
FIELDFORCE SPORT CHRONO 241926.1

ALLIANCE



005352
ALLIANCE CHRONO 241745.1



005853
ALLIANCE XS 241839, 241840, 241875



005861
ALLIANCE XS 241877, 241841, 241842



005980
ALLIANCE XS 241879



006128
ALLIANCE 241907



006134
ALLIANCE 241911, 241912, 241913



006135
ALLIANCE 241910.1, 241909, 241910

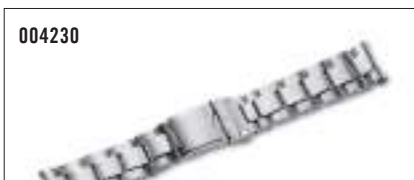


006163
ALLIANCE 241908



006165
ALLIANCE 241904.1, 241904, 241905, 241906

MAVERICK



004230
MAVERICK CHRONO 241689, 241695



004305
MAVERICK SMALL 241701



MAVERICK CHRONO 241693, 241791



MAVERICK SMALL 241610



MAVERICK CHRONO 241797



MAVERICK CHRONO 241865



MAVERICK CHRONO 241952
MAVERICK 241950, 241951, 242008



MAVERICK CHRONO 241946
MAVERICK 241934, 242007

AIRBOSS



AIRBOSS MECHANICAL 241888



AIRBOSS MECHANICAL 241887, 241973



AIRBOSS MECHANICAL 241886



AIRBOSS MECHANICAL 241974



AIRBOSS MECHANICAL 241998



5 YEAR WARRANTY +



Victorinox watches are covered by our five-year warranty +, which exceeds the industry average. The comprehensive processes implemented by our quality team makes it possible for us to offer this extended warranty. Victorinox watches are subjected to rigorous testing and numerous quality controls before they are distributed. This warranty offers specific legal rights; other rights may also apply that vary from state to state or country to country.

ANYTIME SERVICE

We hope that customers never experience a problem with a Victorinox watch, but in the event of a functional defect covered by warranty, the consumer can follow the simple steps below to file a claim. For their convenience, we have a global network of authorized Repair Centers ready to provide service anywhere in the world. Consumers may also follow these same steps to request a repair not covered by warranty:



- Visit victorinox.com.
- Click on 'Stores'.
- Enter location and select 'Repair Centers' to locate an Authorized Repair Center.
- Contact the authorized Repair Center for assistance.



PRODUCT TESTS

Our watches comply fully with both European ISO standards and the federation of the Swiss Watch Industry standards (NIHS). In addition, Victorinox has also introduced its own standards and internal tests. We self-monitor our production to make sure each stage is mastered perfectly and that our extensive certification controls are adhered to until delivery. Victorinox also certifies each component that is brought in from external suppliers. The Victorinox Quality Team conducts tests before certifying a design.

CONFORMITY

Each component entering our production facility in Delémont, Switzerland is checked to verify its dimensions, aesthetics, interchangeability, and physical and chemical resistance to guarantee its impeccable quality. This process is developed by our quality team, who defines standards for each type of component. All this occurs even before the production of a watch begins, thus ensuring the process is fully integrated from the very start.

MECHANICAL & QUARTZ MOVEMENTS

Movement endures stress and strain throughout its lifetime. To ensure all of our movements remain functional and accurate for as long as possible, Victorinox simulates watch wearing in its own quality lab to test every quartz, manual and automatic caliber in its watches.

WATER RESISTANCE

Victorinox watch cases are hermetically sealed using high-grade rubber gaskets and screw-in case backs to ensure that the movements are not exposed to moisture or dust. In the manufacturing process, each watch is individually tested for water-resistance with ultra-precise machines.

TEMPERATURE RESISTANCE

Heat chamber and humidity tests are performed on Victorinox watches to make sure they continue to function perfectly in the tropics. Low temperature tests are also conducted to check that the watch – and more specifically the mechanism – can withstand cold weather conditions.

CORROSION RESISTANCE

Perspiration, chlorine, soap, seawater, air pollution: these and other environmental factors can damage a watch's components and materials. Victorinox performs tests to make sure the parts in its watches do not suffer wear or loss of mobility due to exposure to corrosive elements. Neutrality and skin sensitization tests are also conducted on all components that come into contact with skin, including cases and all types of bracelets.

UV RESISTANCE

Intense light and sunlight can damage many materials used in watches, such as coatings, synthetic elements, rubber and leather. These materials are therefore rigorously tested to ensure their durability. Certification is only granted by our Quality Team if no signs of ageing are observed during these tests.

TRACTION/TORSION RESISTANCE

Buckles on leather straps and clasps on steel bracelets must withstand constant use during a watch's lifetime. Victorinox submits all of its watches to traction and torsion tests, with a particular focus on attachment pins, to make sure they can resist accidental snagging and also that there be no breakage or damage to the bracelet.

VIBRATION RESISTANCE

Everyday wrist movements and sports such as cycling, jogging, horseback riding or skiing can affect the performance, quality and accuracy of a watch. To prevent this, special machines put Victorinox watches through more severe vibrations than they would ever experience on even the most active of wrists. If a watch or any of its components does not survive this trial, it is not certified.

SHOCK RESISTANCE

A number of severe shock-resistance tests are performed on Victorinox watches. Heavy impacts – such as the equivalent of a violent collision with a wall, for example – are reproduced in the lab. After absorbing the shock, we make sure that the movement is functional.

AGE RESISTANCE

Victorinox watches are function-tested to simulate the ageing process. Moving parts such as push-pieces, crowns and bezels are turned and manipulated to replicate several years of normal use.

ABRASION RESISTANCE

The Quality Team conducts intensive abrasion tests, particularly on cases, bracelets and straps, to make sure our watches can be worn in all situations without suffering premature wear during their lifetime.

VISUAL AND MANUAL TESTING

In addition to these mechanical and chemical tests, every Victorinox watch is visually checked by a member of the Quality Team between each manufacturing stage to assure its overall quality according to our own Victorinox standards. If a watch does not pass this visual inspection, it is repaired or replaced. All watches that do not pass our quality check are discarded.



CUSTOMER SERVICE

Keeping a Victorinox watch looking its best and working perfectly requires regular servicing. Only authorized Victorinox customer service centers are able to make sure the work carried out meets our standards of excellence.

- each watch sent to an authorized Victorinox service center is handled by a professional watchmaker.
- a diagnostic is performed and a detailed cost estimate made, free of charge (for watches that are no longer under warranty), which is submitted before any repairs are carried out.
- once the customer has accepted the cost estimate, our watchmakers carry out all the necessary procedures, including the replacement of any worn or defective components.

Victorinox guarantees the availability of spare parts for 10 years after production has ended. After servicing, the watch is returned the customer with a one-year warranty on the work carried out.

MAINTENANCE SERVICES

As it endures daily life, skiing, watersports and sudden variations in temperature, a Victorinox watch requires care and maintenance to make sure it remains reliable and to deliver on its promise of accompanying its wearer on their everyday adventures.

Two types of servicing are available at any of our authorized Victorinox customer service centers.

Every two years, we recommend maintenance servicing. This will ensure that:

- the watch is completely water-resistant (it is dismantled, all the gaskets and the crown are replaced if necessary, the case is cleaned, etc.)
- the movement works correctly (the battery is changed in a quartz watch, mechanical movements are checked and adjusted)

Every six years, depending on the model of the watch, personal use and the local climate, we recommend a complete overhaul. This involves:

- a comprehensive revision of the movement (it is dismantled, the functions are checked, any worn component are replaced, etc).
- water-resistance and accuracy are also carefully verified.

WATCH CARE TIPS

OUR ADVICES FOR TAKING CARE OF A VICTORINOX WATCH

Like all quality products, Victorinox watches require attention and care. Following a few basic recommendations will protect the watch over time.

WATER-RESISTANCE

To prevent the infiltration of water or dust, all watches (quartz or mechanical) should have their water-resistance checked every year by an authorized Victorinox service

center. We recommend having this test done before the summer or before going on vacation, as this is when watches are particularly exposed to water pressure and strong variations in temperature.

METERS	FEET	ATM	USAGE
50	165	5	Suitable for showering or swimming in shallow water
100	330	10	Suitable for swimming or snorkeling
200	660	20	Suitable for scuba diving
500	1650	50	Suitable for serious deep water diving



HOW TO USE YOUR WATCH IN WATER

Water resistance classification: Watches are classified by their degree of water resistance. The water resistance information can be checked on the case back of the Victorinox watch; it refers to the water resistance table on this page.

Water-resistance guarantee: The water-resistance of the watch cannot be guaranteed indefinitely. The gaskets may age, crowns or pushers may receive knocks and changes in temperature may weaken water resistance. We recommend a water-resistance test every 18 months at an authorized Victorinox service center or at least every time the case of the watch is opened.

Important: Do not operate the pushers or the crown while your watch is underwater. Make sure both are properly pushed back or screwed down.

MECHANICAL MOVEMENT (MAINTENANCE)

An automatic or hand-wound movement is a miniaturized engine running 24 hours a day, 7 days a week. To sustain its accuracy (between -2 and + 20 seconds per day), it needs regular maintenance and checking.

CONDENSATION

A sudden change in temperature may cause condensation to appear beneath the crystal. This will not affect the watch's function and will soon disappear on its own. Nevertheless, it indicates a weakness in the watch's water-resistance and we strongly advise taking the watch to an authorized Victorinox service center.





CLEANING

To preserve the attractive appearance of the watch, it should be washed in slightly soapy water, then rinsed in clean water and dried with a soft cloth. Soft toothbrush: A toothbrush may be also used to clean the watch. A brush with soft bristles should be used to avoid scratching the watch case or bracelet. Leather strap: To clean the leather strap, it should be rinsed under clean water then rubbed with a soft brush and a little soap. A soft cloth can be used to wipe it. Cleaned leather should be kept away from any source of heat while it's drying.

STRAP CARE

Authentic Victorinox leather straps will last an average of 12 to 18 months, under normal conditions of use. This lifespan depends on various factors such as skin acidity, perspiration, contact with chemicals, weather conditions, climate and humidity. For instance, contact with water or any other liquid may cause the strap to wear prematurely. To keep the leather strap in a good condition, we recommend removing the watch for daily showering or swimming. If the user has a very active lifestyle, particularly involving frequent exposure to salt water or heavy perspiration, we recommend a steel bracelet or rubber strap. The color and suppleness of leather straps are subject to change with time and exposure to external elements

SHOCKS

Impact, drops and repeated friction that could wear away the metal and affect the watch's mechanism should be avoided. We recommend removing the watch before playing sports such as tennis, squash or golf, and avoiding contact with chemical products, exposure to high temperatures and strong magnetic fields.

TO AVOID

Do not set the date between 21:00 (9 pm) and 03:00 (3 am) when the date mechanism is in action. Be careful to not confuse noon and midnight. Do not expose to chemicals, solvents or gases as they can cause deterioration, discoloration and damage to the case. Do not apply any cosmetics or perfumes directly onto the case, leather strap or metal bracelet. Avoid high temperatures and strong magnetic fields.

WHILE TRAVELING

Before a vacation: To prevent infiltration of water or dust, the watch needs to pass a water-resistance test during the last 18 months at an authorized Victorinox service center. At the airport: To protect the watch from magnetism, we advise removing the watch before going through security control.





COMPONENTS AND MATERIALS

STAINLESS STEEL

The 316L stainless steel alloy used in Victorinox cases and bracelets has strong anti-magnetic properties and is optimised for toughness and corrosion resistance. The 316L stainless steel we use complies with the nickel migration limits imposed by the European REACH Regulation.

PVD (PHYSICAL VAPOR DEPOSITION)

Widely used in watchmaking, PVD is a high-performance, pollution-free and non-allergenic technology that is also employed by the aeronautic industry. The process involves adding a titanium coating to stainless steel by condensing a metal vapour in a partial vacuum, thus circumventing electrolytic and chemical processes. Victorinox also implements a special process for watches with hints of gold: a thin layer of gold powder is added after the surface is treated PVD, providing a longer-lasting finish than conventional gold-plating.

SAPPHIRE CRYSTALS

All Victorinox watches are fitted with a scratch-resistant crystal glass cut from a polished slice of solid sapphire. Each

one is triple-coated with an anti-reflective treatment on the internal side for enhanced legibility.

GENUINE MOTHER-OF-PEARL

Resilient and iridescent, genuine mother-of-pearl features in several Victorinox dial designs. Genuine mother-of-pearl is produced inside the shells of certain molluscs, meaning that each dial adorned with mother-of-pearl is utterly unique.

BATTERIES

Victorinox equips its quartz watches with mercury-free batteries in compliance with global regulations and standards. This positive step towards environmental sustainability has no effect on either the precision or efficiency of a quartz watch. Each battery has an estimated lifespan of 2 years.

LUMINESCENCE

This technology, branded as Super-LumiNova®, offers enhanced brightness in low-light conditions thanks to a non-radioactive and non-toxic substance. Victorinox uses Super-LumiNova® for any highly functional features of its watches, usually applying it to components such as the hands, numerals or bezel markers, etc.

MOVEMENTS

All movements used in our watches are Swiss Made. We mainly use the following three suppliers:

SELLITA:

A vital pillar of the Swiss watchmaking industry that was founded in 1950, SELLITA has a long tradition in the assembly, design and manufacture of quality mechanical movements. We use its movements for a variety of our mechanical watches.

ETA:

ETA has over 200 years of experience in manufacturing quality movements. Its calibers are found in a selection of our mechanical watches.

RONDA:

RONDA is one of the world's leading manufacturers of highly innovative, precision electronic watch movements, which form the foundation of many of our watches.

Automatic Mechanical Movements	Sellita SW200-1 38 hour power reserve 28'800 vibrations/hour (4 Hz) 26 jewels 11 1/2 lines Ø 25.60 mm	ETA 2824-2 38 hour power reserve 28'800 vibrations/hour (4 Hz) 25 jewels 11 1/2 lines Ø 25.60 mm	ETA VALJOUX 7750 48 hour power reserve 28'800 vibrations/hour (4 Hz) 25 jewels 13 ¼ lines Ø 30.00 mm
Quartz Movements	Ronda 517 Day & Date 3 hands 11 1/2 lines Ø 25.60 mm Ronda 715 Date 3 hands 11 1/2 lines Ø 25.60 mm Ronda 6004.D Date Small second 2 hands 11 1/2 lines Ø 25.60 mm	Ronda 705 Date 3 hands 10 1/2 lines Ø 23.3w0 mm Ronda 773 3 hands 7 3/4 lines Ø 17.20 mm Ronda Z60 Day & Date Chrono 3-6-9 13 1/4 lines Ø 25.60 mm	Ronda 708 Date Moon Multifunction 10 1/2 lines Ø 23.30 mm Ronda 5030.D Date Chrono 3-6-9 12 1/2 lines Ø 28.00 mm

*Non-exhaustive liste

CORPORATE BUSINESS

SHOW GENUINE GRATITUDE

WITH OUR TIMEPIECES

Our stylish, robust watches demonstrate appreciation for jobs well done with a heartfelt “Thank you”. Put a smile on their face with a personalized edition of one of our elegant or sporty timepieces. Choose from laser engraving, etching and more to add your company’s touch to our iconic watches. Your clients and employees will thank you right back.



LASER ENGRAVING

241897, FieldForce GMT



LASER ENGRAVING

241921, I.N.O.X. V



TAMPONPRINT

241846, FieldForce



TAMPONPRINT

241954, I.N.O.X. V



ETCHING

6.9050.17K, Santoku Knife
6.9076.22W5, Bread and Pastry Knife



TAMPONPRINT

0.8313.W, Cheese Master



DIGITAL HAPTIC 3D

1.3703, Climber



THERMAL TRANSFER PRINT

602151,
Altmont Professional,
Compact Laptop Backpack



THERMAL TRANSFER PRINT

610598,
TA 5.0, Travel Organizer
with RFID



TECHNICAL SPECIFICATIONS

Ref	Description	Page	EAN	Movement	Power reserve	Case diameter	Case height	LUG width	Strap/bracelet ref
241610	Maverick Small	67	7630000716187	Ronda 705	-	34	7.95	18	004816
<p>Case: Stainless steel, silver, Polished-brushed Bezel: Stainless steel, blue, Polished, Unidirectional rotating bezel Dial: blue, Circular brushed, Military Time 24h Crystal: Sapphire Case back: Stainless steel, Screw-in caseback Bracelet: Rubber, blue, - Closure: Stainless steel, Regular buckle Water resistant to: 10 ATM/100 M/330 FT Battery Nr.: 371</p>									
241682.1	I.N.O.X.	28	7630000718075	Ronda 715	-	43	13.58	21	005104
<p>Case: Stainless steel, silver, Brushed, Screw-Down Crown Bezel: Stainless steel, silver, Polished-brushed, Fixed bezel Dial: black, Matt, Military Time 24h Crystal: Sapphire Case back: Stainless steel, Screw-in caseback Bracelet: Rubber, black, - Closure: Stainless steel, Regular buckle Water resistant to: 20 ATM/200 M/660 FT Battery Nr.: 371</p>									
241688.1	I.N.O.X.	28	7630000718068	Ronda 715	-	43	13.58	21	005108
<p>Case: Stainless steel, silver, Brushed, Screw-Down Crown Bezel: Stainless steel, silver, Polished-brushed, Fixed bezel Dial: blue, Matt, Military Time 24h Crystal: Sapphire Case back: Stainless steel, Screw-in caseback Bracelet: Rubber, blue, - Closure: Stainless steel, Regular buckle Water resistant to: 20 ATM/200 M/660 FT Battery Nr.: 371</p>									
241689	Maverick Chrono	64	7630000718808	Ronda 5030.D	-	43	12.2	22	004230
<p>Case: Stainless steel, silver, Polished-brushed Bezel: Stainless steel, blue, Polished, Unidirectional rotating bezel Dial: blue, Circular brushed Crystal: Sapphire Case back: Stainless steel, Screw-in caseback Bracelet: Stainless steel, silver, Brushed Closure: Stainless steel, Deployant clasp, Diver Extension Water resistant to: 10 ATM/100 M/330 FT Battery Nr.: 395</p>									
241693	Maverick Chrono	64	7611160049742	Ronda 5030.D	-	43	12.2	22	004793
<p>Case: Stainless steel, silver/gold, Polished-brushed Bezel: Stainless steel, green, Polished, Unidirectional rotating bezel Dial: green, Circular brushed Crystal: Sapphire Case back: Stainless steel, Screw-in caseback Bracelet: Stainless steel, gold, Brushed Closure: Stainless steel, Deployant clasp, Diver Extension Water resistant to: 10 ATM/100 M/330 FT Battery Nr.: 395</p>									
241695	Maverick Chrono	64	7611160049766	Ronda 5030.D	-	43	12.2	22	004230
<p>Case: Stainless steel, silver, Polished-brushed Bezel: Stainless steel, black, Polished, Unidirectional rotating bezel Dial: black, Circular brushed Crystal: Sapphire Case back: Stainless steel, Screw-in caseback Bracelet: Stainless steel, silver, Brushed Closure: Stainless steel, Deployant clasp, Diver Extension Water resistant to: 10 ATM/100 M/330 FT Battery Nr.: 395</p>									
241791	Maverick Chrono	64	7630000726643	Ronda 5030.D	-	43	12.2	22	004793
<p>Case: Stainless steel, silver/gold, Polished-brushed Bezel: Stainless steel, blue, Polished, Unidirectional rotating bezel Dial: blue, Circular brushed Crystal: Sapphire Case back: Stainless steel, Screw-in caseback Bracelet: Stainless steel, silver, Brushed Closure: Stainless steel, Deployant clasp, Diver Extension Water resistant to: 10 ATM/100 M/330 FT Battery Nr.: 395</p>									
241834	I.N.O.X. Mechanical	31	7630000733474	Sellita SW 200-1	38 h	43	13.5	21	005811
<p>Case: Stainless steel, silver, Brushed, Screw-Down Crown Bezel: Stainless steel, silver, Polished-brushed, Fixed bezel Dial: blue, Guilloché, Military Time 24h Crystal: Sapphire Case back: Stainless steel, Screw-in caseback, See-Through Caseback Bracelet: Wood, brown, - Closure: Stainless steel, Deployant clasp Water resistant to: 20 ATM/200 M/660 FT Battery Nr.: -</p>									
241835	I.N.O.X. Mechanical	31	7630000733498	Sellita SW 200-1	38 h	43	13.5	21	005261
<p>Case: Stainless steel, silver, Brushed, Screw-Down Crown Bezel: Stainless steel, silver, Polished-brushed, Fixed bezel Dial: blue, Guilloché, Military Time 24h Crystal: Sapphire Case back: Stainless steel, Screw-in caseback, See-Through Caseback Bracelet: Stainless steel, brown, Polished-brushed Closure: Stainless steel, Deployant clasp, Diver Extension Water resistant to: 20 ATM/200 M/660 FT Battery Nr.: -</p>									
241837	I.N.O.X. Mechanical	31	7630000733504	Sellita SW 200-1	38 h	43	13.5	21	005261
<p>Case: Stainless steel, silver, Brushed, Screw-Down Crown Bezel: Stainless steel, silver, Polished-brushed, Fixed bezel Dial: black, Guilloché, Military Time 24h Crystal: Sapphire Case back: Stainless steel, Screw-in caseback, See-Through Caseback Bracelet: Stainless steel, silver, Polished-brushed Closure: Stainless steel, Deployant clasp, Diver Extension Water resistant to: 20 ATM/200 M/660 FT Battery Nr.: -</p>									
241839	Alliance XS	58	7630000734884	Ronda 773	-	28	8.1	12	005853
<p>Case: Stainless steel, silver, Polished Bezel: Stainless steel, silver, Polished, Fixed bezel Dial: black, Sunray brushed Crystal: Sapphire Case back: Stainless steel, Screw-in caseback Bracelet: Stainless steel, silver, Polished Closure: Stainless steel, Push-button safety clasp Water resistant to: 10 ATM/100 M/330 FT Battery Nr.: 364</p>									
241840	Alliance XS	58	7630000734891	Ronda 773	-	28	8.1	12	005853
<p>Case: Stainless steel, silver, Polished Bezel: Stainless steel, silver, Polished, Fixed bezel Dial: white, Pearly-sparkle Crystal: Sapphire Case back: Stainless steel, Screw-in caseback Bracelet: Stainless steel, silver, Polished Closure: Stainless steel, Push-button safety clasp Water resistant to: 10 ATM/100 M/330 FT Battery Nr.: 364</p>									
241841	Alliance XS	58	7630000734907	Ronda 773	-	28	8.1	12	005861
<p>Case: Stainless steel, silver/gold, Polished Bezel: Stainless steel, rose-gold, Polished, Fixed bezel Dial: dark gray, Sunray brushed Crystal: Sapphire Case back: Stainless steel, Screw-in caseback Bracelet: Stainless steel, two-tone, Polished Closure: Stainless steel, Push-button safety clasp Water resistant to: 10 ATM/100 M/330 FT Battery Nr.: 364</p>									
241842	Alliance XS	58	7630000734914	Ronda 773	-	28	8.1	12	005861
<p>Case: Stainless steel, silver/gold, Polished Bezel: Stainless steel, rose-gold, Polished, Fixed bezel Dial: silver white, Sunray brushed Crystal: Sapphire Case back: Stainless steel, Screw-in caseback Bracelet: Stainless steel, two-tone, Polished Closure: Stainless steel, Push-button safety clasp Water resistant to: 10 ATM/100 M/330 FT Battery Nr.: 364</p>									
241846	FieldForce	39	7630000735393	Ronda 517	-	42	11	21	005939
<p>Case: Stainless steel, silver, Polished-brushed Bezel: Aluminium, black, Polished-brushed, Fixed bezel Dial: black, Matt Crystal: Sapphire Case back: Stainless steel, Screw-in caseback Bracelet: Leather, black, - Closure: Stainless steel, Regular buckle Water resistant to: 10 ATM/100 M/330 FT Battery Nr.: 371</p>									

*Power reserve:
indicative value provided by the movement manufacturer*

Ref	Description	Page	EAN	Movement	Power reserve	Case diameter	Case height	LUG width	Strap/bracelet ref
241848	FieldForce	39	7630000735416	Ronda 517	-	42	11	21	005945
<p>Case: Stainless steel, silver, Polished-brushed Bezel: Aluminium, blue, Polished-brushed, Fixed bezel Dial: blue, Matt Crystal: Sapphire Case back: Stainless steel, Screw-in caseback Bracelet: Leather, brown, - Closure: Stainless steel, Regular buckle Water resistant to: 10 ATM/100 M/330 FT Battery Nr.: 371</p>									
241849	FieldForce	39	7630000735423	Ronda 517	-	42	11	21	005943
<p>Case: Stainless steel, silver, Polished-brushed Bezel: Aluminium, black, Polished-brushed, Fixed bezel Dial: black, Matt Crystal: Sapphire Case back: Stainless steel, Screw-in caseback Bracelet: Stainless steel, silver, Polished-brushed Closure: Stainless steel, Regular buckle Water resistant to: 10 ATM/100 M/330 FT Battery Nr.: 371</p>									
241851	FieldForce	39	7630000735447	Ronda 517	-	42	11	21	005943
<p>Case: Stainless steel, silver, Polished-brushed Bezel: Aluminium, blue, Polished-brushed, Fixed bezel Dial: blue, Matt Crystal: Sapphire Case back: Stainless steel, Screw-in caseback Bracelet: Stainless steel, silver, Polished-brushed Closure: Stainless steel, Push-button safety clasp Water resistant to: 10 ATM/100 M/330 FT Battery Nr.: 371</p>									
241852	FieldForce Chrono	40	7630000735461	Ronda 5030.D	-	42	11	21	005939
<p>Case: Stainless steel, silver, Polished-brushed Bezel: Aluminium, black, Polished-brushed, Fixed bezel, Tachymeter Dial: black, Matt Crystal: Sapphire Case back: Stainless steel, Screw-in caseback Bracelet: Leather, black, - Closure: Stainless steel, Regular buckle Water resistant to: 10 ATM/100 M/330 FT Battery Nr.: 395</p>									
241854	FieldForce Chrono	40	7630000735478	Ronda 5030.D	-	42	11	21	005945
<p>Case: Stainless steel, silver, Polished-brushed Bezel: Aluminium, blue, Polished-brushed, Fixed bezel, Tachymeter Dial: blue, Matt Crystal: Sapphire Case back: Stainless steel, Screw-in caseback Bracelet: Leather, brown, - Closure: Stainless steel, Regular buckle Water resistant to: 10 ATM/100 M/330 FT Battery Nr.: 395</p>									
241855	FieldForce Chrono	40	7630000735485	Ronda 5030.D	-	42	11	21	005943
<p>Case: Stainless steel, silver, Polished-brushed Bezel: Aluminium, black, Polished-brushed, Fixed bezel, Tachymeter Dial: black, Matt Crystal: Sapphire Case back: Stainless steel, Screw-in caseback Bracelet: Stainless steel, black, Polished-brushed Closure: Stainless steel, Push-button safety clasp Water resistant to: 10 ATM/100 M/330 FT Battery Nr.: 395</p>									
241857	FieldForce Chrono	40	7630000735645	Ronda 5030.D	-	42	11	21	005943
<p>Case: Stainless steel, silver, Polished-brushed Bezel: Aluminium, blue, Polished-brushed, Fixed bezel, Tachymeter Dial: blue, Matt Crystal: Sapphire Case back: Stainless steel, Screw-in caseback Bracelet: Stainless steel, silver, Polished-brushed Closure: Stainless steel, Push-button safety clasp Water resistant to: 10 ATM/100 M/330 FT Battery Nr.: 395</p>									
241859	I.N.O.X. Carbon	27	7630000735584	Ronda 715	-	43	13.58	21	005885.9
<p>Case: Carbon, black, -, Screw-Down Crown Bezel: Carbon, black, -, Fixed bezel Dial: black, Matt, Military Time 24h Crystal: Sapphire Case back: Carbon, Screw-in caseback Bracelet: Paracord, black, - Closure: Stainless steel, Paracord closure Water resistant to: 20 ATM/200 M/660 FT Battery Nr.: 371</p>									
241860	I.N.O.X. Carbon	27	7630000735591	Ronda 715	-	43	13.58	21	005886.9
<p>Case: Carbon, black, -, Screw-Down Crown Bezel: Carbon, black, -, Fixed bezel Dial: blue, Matt, Military Time 24h Crystal: Sapphire Case back: Carbon, Screw-in caseback Bracelet: Paracord, blue, - Closure: Stainless steel, Paracord closure Water resistant to: 20 ATM/200 M/660 FT Battery Nr.: 371</p>									
241865	Maverick Chrono	64	7630000735652	Ronda 5030.D	-	43	11.4	22	005946
<p>Case: Stainless steel, silver, Polished-brushed Bezel: Stainless steel, blue, Polished, Unidirectional rotating bezel Dial: blue, Circular brushed Crystal: Sapphire Case back: Stainless steel, Screw-in caseback Bracelet: Leather, brown, - Closure: Stainless steel, Regular buckle Water resistant to: 10 ATM/100 M/330 FT Battery Nr.: 395</p>									
241866.1	I.N.O.X. Carbon Mechanical	31	7611160088567	Sellita SW 200-1	38 h	43	13.58	21	006006
<p>Case: Carbon, black, -, Screw-Down Crown Bezel: Carbon, black, Forged Carbon, Fixed bezel Dial: black, Alox pattern, Military Time 24h Crystal: Sapphire Case back: Carbon, Screw-in caseback, See-Through Caseback Bracelet: Rubber, black, - Closure: Titanium, Deployant clasp Water resistant to: 20 ATM/200 M/660 FT Battery Nr.: -</p>									
241875	Alliance XS	57	7611160088505	Ronda 773	-	28	8.1	12	005853
<p>Case: Stainless steel, silver, Polished Bezel: Stainless steel, silver, Polished, Fixed bezel Dial: white, Pearly-sparkle Crystal: Sapphire Case back: Stainless steel, Screw-in caseback Bracelet: Stainless steel, silver, Polished Closure: Stainless steel, Deployant clasp Water resistant to: 10 ATM/100 M/330 FT Battery Nr.: 364</p>									
241877	Alliance XS	57	7611160088529	Ronda 773	-	28	8.1	12	005861
<p>Case: Stainless steel, silver, Polished Bezel: Stainless steel, rose-gold, Polished, Fixed bezel Dial: white, Mother-of-pearl Crystal: Sapphire Case back: Stainless steel, Screw-in caseback Bracelet: Stainless steel, two-tone, Polished Closure: Stainless steel, Deployant clasp Water resistant to: 10 ATM/100 M/330 FT Battery Nr.: 364</p>									
241879	Alliance XS	57	7611160088543	Ronda 773	-	28	8.1	12	005980
<p>Case: Stainless steel, silver, Polished Bezel: Stainless steel, rose-gold, Polished, Fixed bezel Dial: silver/gold, Mother-of-pearl Crystal: Sapphire Case back: Stainless steel, Screw-in caseback Bracelet: Mesh, two-tone, - Closure: Stainless steel, Mesh buckle Water resistant to: 10 ATM/100 M/330 FT Battery Nr.: 364</p>									
241886	Airboss Mechanical	71	7611160088994	Sellita SW 200-1	38 h	42	11	22	006019.1
<p>Case: Stainless steel, black, Sandblasted Bezel: Stainless steel, black, Sandblasted, Bidirectional rotating bezel, Slide Rule Dial: black, Diamond-cut, Military Time 24h Crystal: Sapphire Case back: Stainless steel, Screw-in caseback, See-Through Caseback Bracelet: Leather, brown, - Closure: Stainless steel, Deployant clasp Water resistant to: 10 ATM/100 M/330 FT Battery Nr.: -</p>									

TECHNICAL SPECIFICATIONS

Ref	Description	Page	EAN	Movement	Power reserve	Case diameter	Case height	LUG width	Strap/bracelet ref
241887	Airboss Mechanical	71	7611160089007	Sellita SW 200-1	38 h	42	11	22	006019
<p>Case: Stainless steel, silver, Grinded Bezel: Stainless steel, black, Grinded, Bidirectional rotating bezel, Slide Rule Dial: blue, Diamond-cut, Military Time 24h Crystal: Sapphire Case back: Stainless steel, Screw-in caseback, See-Through Caseback Bracelet: Leather, brown, - Closure: Stainless steel, Deployant clasp Water resistant to: 10 ATM/100 M/330 FT Battery Nr.: -</p>									
241888	Airboss Mechanical	71	7611160089014	Sellita SW 200-1	38 h	42	11	22	004447
<p>Case: Stainless steel, silver, Grinded Bezel: Stainless steel, black, Grinded, Bidirectional rotating bezel, Slide Rule Dial: black, Diamond-cut, Military Time 24h Crystal: Sapphire Case back: Stainless steel, Screw-in caseback, See-Through Caseback Bracelet: Stainless steel, silver, Grinded Closure: Stainless steel, Deployant clasp Water resistant to: 10 ATM/100 M/330 FT Battery Nr.: -</p>									
241889	FieldForce Sport Chrono	48	7611160089144	Ronda 5030.D	-	42	11	21	005766
<p>Case: Stainless steel, black, Polished-brushed Bezel: Stainless steel, black ice, Polished, Fixed bezel, Tachymeter Dial: black, Matt Crystal: Sapphire Case back: Stainless steel, Screw-in caseback Bracelet: Rubber, black, - Closure: Stainless steel, Regular buckle Water resistant to: 10 ATM/100 M/330 FT Battery Nr.: 395</p>									
241890	FieldForce Sport Chrono	48	7611160089151	Ronda 5030.D	-	42	11	21	006047
<p>Case: Stainless steel, black, Polished-brushed Bezel: Stainless steel, black ice, Polished, Fixed bezel, Tachymeter Dial: black, Matt Crystal: Sapphire Case back: Stainless steel, Screw-in caseback Bracelet: Stainless steel, black, Polished-brushed Closure: Stainless steel, Deployant clasp Water resistant to: 10 ATM/100 M/330 FT Battery Nr.: 395</p>									
241891	FieldForce Sport Chrono	48	7611160089168	Ronda 5030.D	-	42	11	21	005766
<p>Case: Stainless steel, black, Polished-brushed Bezel: Stainless steel, black ice, Polished, Fixed bezel, Tachymeter Dial: grey/black, Matt Crystal: Sapphire Case back: Stainless steel, Screw-in caseback Bracelet: Rubber, black, - Closure: Stainless steel, Regular buckle Water resistant to: 10 ATM/100 M/330 FT Battery Nr.: 395</p>									
241893	FieldForce Sport Chrono	48	7611160089182	Ronda 5030.D	-	42	11	21	006048
<p>Case: Stainless steel, silver, Polished-brushed Bezel: Stainless steel, black ice, Polished, Fixed bezel, Tachymeter Dial: black, Matt Crystal: Sapphire Case back: Stainless steel, Screw-in caseback Bracelet: Rubber, orange, - Closure: Stainless steel, Regular buckle Water resistant to: 10 ATM/100 M/330 FT Battery Nr.: 395</p>									
241897	FieldForce Sport GMT	47	7611160090737	Ronda 515.24H	-	0	0	21	006157
<p>Case: Stainless steel, black, Polished-brushed Bezel: Stainless steel, black, Polished, Fixed bezel Dial: black, Matt Crystal: Sapphire Case back: Stainless steel, Screw-in caseback Bracelet: Rubber, orange, - Closure: Stainless steel, Regular buckle Water resistant to: 10 ATM/100 M/330 FT Battery Nr.: 371</p>									
241899	FieldForce Classic GMT	43	7611160091482	Ronda 5030.D	-	42	11	21	005943
<p>Case: Stainless steel, silver, Polished-brushed Bezel: Stainless steel, black, Polished, Fixed bezel, Tachymeter Dial: black, Sunray brushed Crystal: Sapphire Case back: Stainless steel, Screw-in caseback Bracelet: Stainless steel, silver, Polished-brushed Closure: Stainless steel, Push-button safety clasp Water resistant to: 10 ATM/100 M/330 FT Battery Nr.: 395</p>									
241900	FieldForce Classic GMT	43	7611160091499	Ronda 5030.D	-	42	11.9	21	006107
<p>Case: Stainless steel, silver, Polished-brushed Bezel: Stainless steel, blue, Polished, Fixed bezel, Tachymeter Dial: silver white, Sunray brushed Crystal: Sapphire Case back: Stainless steel, Screw-in caseback Bracelet: Leather, brown, - Closure: Stainless steel, Deployant clasp Water resistant to: 10 ATM/100 M/330 FT Battery Nr.: 395</p>									
241901	FieldForce Classic GMT	43	7611160091505	Ronda 5030.D	-	42	11	21	005943
<p>Case: Stainless steel, silver, Polished-brushed Bezel: Stainless steel, blue, Polished, Fixed bezel, Tachymeter Dial: blue, Sunray brushed Crystal: Sapphire Case back: Stainless steel, Screw-in caseback Bracelet: Stainless steel, silver, Polished-brushed Closure: Stainless steel, Push-button safety clasp Water resistant to: 10 ATM/100 M/330 FT Battery Nr.: 395</p>									
241902	FieldForce Classic GMT	43	7611160091680	Ronda 5030.D	-	42	11	21	006085
<p>Case: Stainless steel, silver, Polished-brushed Bezel: Stainless steel, grey/gold, Polished, Fixed bezel, Tachymeter Dial: grey, Sunray brushed Crystal: Sapphire Case back: Stainless steel, Screw-in caseback Bracelet: Stainless steel, two-tone, Polished-brushed Closure: Stainless steel, Push-button safety clasp Water resistant to: 10 ATM/100 M/330 FT Battery Nr.: 395</p>									
241903	FieldForce Classic GMT	43	7611160091673	Ronda 5030.D	-	42	11	21	006085
<p>Case: Stainless steel, silver, Polished-brushed Bezel: Stainless steel, grey/gold, Polished, Fixed bezel, Tachymeter Dial: grey, Sunray brushed Crystal: Sapphire Case back: Stainless steel, Screw-in caseback Bracelet: Stainless steel, two-tone, Polished-brushed Closure: Stainless steel, Push-button safety clasp Water resistant to: 10 ATM/100 M/330 FT Battery Nr.: 395</p>									
241904	Alliance	53	7611160124821	Ronda 705	-	40	9.75	21	006165
<p>Case: Stainless steel, silver, Polished-brushed Bezel: Stainless steel, silver, Polished, Fixed bezel Dial: black, Circular brushed Crystal: Sapphire Case back: Stainless steel, Screw-in caseback Bracelet: Leather, black, - Closure: Stainless steel, Regular buckle Water resistant to: 10 ATM/100 M/330 FT Battery Nr.: 371</p>									
241904.1	Alliance	55	7611160124920	Ronda 705	-	40	8.95	21	006165
<p>Case: Stainless steel, silver, Polished-brushed Bezel: Stainless steel, silver, Polished, Fixed bezel Dial: black, Circular brushed Crystal: Sapphire Case back: Stainless steel, Screw-in caseback Bracelet: Leather, black, - Closure: Stainless steel, Regular buckle Water resistant to: 10 ATM/100 M/330 FT Battery Nr.: 371</p>									

Ref	Description	Page	EAN	Movement	Power reserve	Case diameter	Case height	LUG width	Strap/bracelet ref	
241905	Alliance	53	7611160124838	Ronda 705	-	40	9.75	21	006165	
<p>Case: Stainless steel, silver, Polished-brushed Bezel: Stainless steel, silver, Polished, Fixed bezel Dial: white, Circular brushed Crystal: Sapphire Case back: Stainless steel, Screw-in caseback Bracelet: Leather, black, - Closure: Stainless steel, Regular buckle Water resistant to: 10 ATM/100 M/330 FT Battery Nr.: 371</p>										
241906	Alliance	53	7611160124845	Ronda 705	-	40	9.75	21	006165	
<p>Case: Stainless steel, silver, Polished-brushed Bezel: Stainless steel, silver, Polished, Fixed bezel Dial: blue, Circular brushed Crystal: Sapphire Case back: Stainless steel, Screw-in caseback Bracelet: Leather, black, - Closure: Stainless steel, Regular buckle Water resistant to: 10 ATM/100 M/330 FT Battery Nr.: 371</p>										
241907	Alliance	53	7611160124852	Ronda 705	-	40	9.75	21	006128	
<p>Case: Stainless steel, silver, Polished-brushed Bezel: Stainless steel, silver, Polished, Fixed bezel Dial: white, Circular brushed Crystal: Sapphire Case back: Stainless steel, Screw-in caseback Bracelet: Leather, brown, - Closure: Stainless steel, Regular buckle Water resistant to: 10 ATM/100 M/330 FT Battery Nr.: 371</p>										
241908	Alliance	53	7611160124869	Ronda 705	-	40	9.75	21	006163	
<p>Case: Stainless steel, rose-gold, Polished-brushed Bezel: Stainless steel, rose-gold, Polished, Fixed bezel Dial: dark gray, Circular brushed Crystal: Sapphire Case back: Stainless steel, Screw-in caseback Bracelet: Leather, grey, - Closure: Stainless steel, Butterfly Water resistant to: 10 ATM/100 M/330 FT Battery Nr.: 371</p>										
241909	Alliance	54	7611160124876	Ronda 705	-	40	60	21	006135	
<p>Case: Stainless steel, silver, Polished-brushed Bezel: Stainless steel, silver, Polished, Fixed bezel Dial: black, Circular brushed Crystal: Sapphire Case back: Stainless steel, Screw-in caseback Bracelet: Stainless steel, silver, Polished-brushed Closure: Stainless steel, Butterfly Water resistant to: 10 ATM/100 M/330 FT Battery Nr.: 371</p>										
241910	Alliance	54	7611160124883	Ronda 705	-	40	60	21	006135	
<p>Case: Stainless steel, silver, Polished-brushed Bezel: Stainless steel, silver, Polished, Fixed bezel Dial: blue, Circular brushed Crystal: Sapphire Case back: Stainless steel, Screw-in caseback Bracelet: Stainless steel, silver, Polished-brushed Closure: Stainless steel, Butterfly Water resistant to: 10 ATM/100 M/330 FT Battery Nr.: 371</p>										
241910.1	Alliance	55	7611160124944	Ronda 705	-	40	8.95	21	006135	
<p>Case: Stainless steel, silver, Polished-brushed Bezel: Stainless steel, silver, Polished, Fixed bezel Dial: blue, Circular brushed Crystal: Sapphire Case back: Stainless steel, Screw-in caseback Bracelet: Stainless steel, silver, Polished-brushed Closure: Stainless steel, Butterfly Water resistant to: 10 ATM/100 M/330 FT Battery Nr.: 371</p>										
241911	Alliance	54	7611160124890	Ronda 705	-	40	60	21	006134	
<p>Case: Stainless steel, silver, Polished-brushed Bezel: Stainless steel, rose-gold, Polished, Fixed bezel Dial: blue, Circular brushed Crystal: Sapphire Case back: Stainless steel, Screw-in caseback Bracelet: Stainless steel, two-tone, Polished-brushed Closure: Stainless steel, Butterfly Water resistant to: 10 ATM/100 M/330 FT Battery Nr.: 371</p>										
241912	Alliance	54	7611160124906	Ronda 705	-	40	60	21	006134	
<p>Case: Stainless steel, silver, Polished-brushed Bezel: Stainless steel, rose-gold, Polished, Fixed bezel Dial: white, Circular brushed Crystal: Sapphire Case back: Stainless steel, Screw-in caseback Bracelet: Stainless steel, two-tone, Polished-brushed Closure: Stainless steel, Butterfly Water resistant to: 10 ATM/100 M/330 FT Battery Nr.: 371</p>										
241913	Alliance	54	7611160124913	Ronda 705	-	40	60	21	006134	
<p>Case: Stainless steel, silver, Polished-brushed Bezel: Stainless steel, rose-gold, Polished, Fixed bezel Dial: green, Circular brushed Crystal: Sapphire Case back: Stainless steel, Screw-in caseback Bracelet: Stainless steel, two-tone, Polished-brushed Closure: Stainless steel, Butterfly Water resistant to: 10 ATM/100 M/330 FT Battery Nr.: 371</p>										
241918	I.N.O.X. V	33	7611160121639	Ronda 715	-	37	12.4	18	006073.9	
<p>Case: Stainless steel, silver, Brushed Bezel: Stainless steel, silver, Polished-brushed, Fixed bezel Dial: black, Matt Crystal: Sapphire Case back: Stainless steel, Screw-in caseback Bracelet: Paracord, black, - Closure: Stainless steel, Regular buckle Water resistant to: 10 ATM/100 M/330 FT Battery Nr.: 371</p>										
241919	I.N.O.X. V	34	7611160121868	Ronda 715	-	37	12.4	18	006145	
<p>Case: Stainless steel, silver, Brushed Bezel: Stainless steel, silver, Polished-brushed, Fixed bezel Dial: white, Matt Crystal: Sapphire Case back: Stainless steel, Screw-in caseback Bracelet: Rubber, blue, - Closure: Stainless steel, Regular buckle Water resistant to: 10 ATM/100 M/330 FT Battery Nr.: 371</p>										
241920	I.N.O.X. V	33	7611160121875	Ronda 715	-	37	12.4	18	006123.9	
<p>Case: Stainless steel, silver, Brushed Bezel: Stainless steel, silver, Polished-brushed, Fixed bezel Dial: grey, Matt Crystal: Sapphire Case back: Stainless steel, Screw-in caseback Bracelet: Paracord, grey, - Closure: Stainless steel, Regular buckle Water resistant to: 10 ATM/100 M/330 FT Battery Nr.: 371</p>										
241921	I.N.O.X. V	34	7611160121882	Ronda 715	-	37	12.4	18	006146	
<p>Case: Stainless steel, silver, Brushed Bezel: Stainless steel, silver, Polished-brushed, Fixed bezel Dial: white, Matt Crystal: Sapphire Case back: Stainless steel, Screw-in caseback Bracelet: Rubber, white, - Closure: Stainless steel, Regular buckle Water resistant to: 10 ATM/100 M/330 FT Battery Nr.: 371</p>										
241926.1	FieldForce Sport Chrono	47	7611160166500	Ronda 5030.D	-	42	0	21	006214	
<p>Case: Stainless steel, black, Sandblasted Bezel: Stainless steel, black, Sandblasted, Fixed bezel, Tachymeter Dial: black, Matt Crystal: Sapphire Case back: Stainless steel, Screw-in caseback Bracelet: Rubber, black, - Closure: Stainless steel, Regular buckle Water resistant to: 10 ATM/100 M/330 FT Battery Nr.: 395</p>										
241927.1	I.N.O.X. Carbon LE	27	7611160134752	Ronda 715	-	43	13.58	21	005258.9	
<p>Case: Carbon, black, -, Screw-Down Crown Bezel: Carbon, black, -, Fixed bezel Dial: green, - Crystal: Sapphire Case back: Carbon, Screw-in caseback Bracelet: Paracord, green, - Closure: Stainless steel, Regular buckle Water resistant to: 20 ATM/200 M/660 FT Battery Nr.: 371</p>										

TECHNICAL SPECIFICATIONS

Ref	Description	Page	EAN	Movement	Power reserve	Case diameter	Case height	LUG width	Strap/bracelet ref
241928	FieldForce Classic GMT	43	7611160125040	Ronda 5030.D	-	42	11.9	21	006179
<p>Case: Stainless steel, silver, Polished-brushed Bezel: Stainless steel, black, Polished, Fixed bezel, Tachymeter Dial: black, Sunray brushed Crystal: Sapphire Case back: Stainless steel, Screw-in caseback Bracelet: Leather, brown, - Closure: Stainless steel, Deployant clasp Water resistant to: 10 ATM/100 M/330 FT Battery Nr.: 395</p>									
241929	FieldForce Classic GMT	43	7611160125392	Ronda 5030.D	-	42	11.9	21	006180
<p>Case: Stainless steel, silver, Polished-brushed Bezel: Stainless steel, blue, Polished, Fixed bezel, Tachymeter Dial: blue, Sunray brushed Crystal: Sapphire Case back: Stainless steel, Screw-in caseback Bracelet: Leather, black, - Closure: Stainless steel, Deployant clasp Water resistant to: 10 ATM/100 M/330 FT Battery Nr.: 395</p>									
241930	FieldForce Classic GMT	44	7611160126870	Ronda 515.24H	-	42	75	21	005943
<p>Case: Stainless steel, silver, Polished-brushed Bezel: Stainless steel, black, Polished, Fixed bezel Dial: black, Sunray brushed Crystal: Sapphire Case back: Stainless steel, Screw-in caseback Bracelet: Stainless steel, silver, Polished-brushed Closure: Stainless steel, Push-button safety clasp Water resistant to: 10 ATM/100 M/330 FT Battery Nr.: 371</p>									
241931	FieldForce Classic GMT	44	7611160126887	Ronda 515.24H	-	42	11.3	21	006107
<p>Case: Stainless steel, silver, Polished-brushed Bezel: Stainless steel, blue, Polished, Fixed bezel Dial: silver white, Sunray brushed Crystal: Sapphire Case back: Stainless steel, Screw-in caseback Bracelet: Leather, brown, - Closure: Stainless steel, Deployant clasp Water resistant to: 10 ATM/100 M/330 FT Battery Nr.: 371</p>									
241934	Maverick	63	7613329143216	Ronda 715	-	43	7.5	21	006355
<p>Case: Stainless steel, silver, Brushed Bezel: Stainless steel, green, Polished, Unidirectional rotating bezel Dial: green, Brushed, Military Time 24h Crystal: Sapphire Case back: Stainless steel, Screw-in caseback Bracelet: Stainless steel, silver, Polished-brushed Closure: Stainless steel, Double locking safety clasp, Diver Extension Water resistant to: 10 ATM/100 M/330 FT Battery Nr.: 371</p>									
241946	Maverick Chrono	64	7611160196583	Ronda 5030.D	-	43.9	12.7	21	006355
<p>Case: Stainless steel, silver, Brushed Bezel: Stainless steel, green, Polished, Unidirectional rotating bezel Dial: green, Diamond-cut Crystal: Sapphire Case back: Stainless steel, Screw-in caseback Bracelet: Stainless steel, silver, Polished-brushed Closure: Stainless steel, Deployant clasp, Diver Extension Water resistant to: 10 ATM/100 M/330 FT Battery Nr.: 395</p>									
241950	Maverick	63	7613329143193	Ronda 715	-	43	7.5	21	006360
<p>Case: Stainless steel, silver, Brushed Bezel: Stainless steel, blue, Polished, Unidirectional rotating bezel Dial: blue, Brushed, Military Time 24h Crystal: Sapphire Case back: Stainless steel, Screw-in caseback Bracelet: Stainless steel, silver/rose-gold, Polished-brushed Closure: Stainless steel, Double locking safety clasp, Diver Extension Water resistant to: 10 ATM/100 M/330 FT Battery Nr.: 371</p>									
241951	Maverick	63	7613329143209	Ronda 715	-	43	7.5	21	006360
<p>Case: Stainless steel, silver, Brushed Bezel: Stainless steel, brown, Polished, Unidirectional rotating bezel Dial: brown, Brushed, Military Time 24h Crystal: Sapphire Case back: Stainless steel, Screw-in caseback Bracelet: Stainless steel, silver/rose-gold, Polished-brushed Closure: Stainless steel, Double locking safety clasp, Diver Extension Water resistant to: 10 ATM/100 M/330 FT Battery Nr.: 371</p>									
241952	Maverick Chrono	64	7611160196590	Ronda 5030.D	-	43.9	12.7	21	006360
<p>Case: Stainless steel, silver, Brushed Bezel: Stainless steel, black/gold, Polished, Unidirectional rotating bezel Dial: black/gold, Diamond-cut Crystal: Sapphire Case back: Stainless steel, Screw-in caseback Bracelet: Stainless steel, silver/rose-gold, Polished-brushed Closure: Stainless steel, Deployant clasp, Diver Extension Water resistant to: 10 ATM/100 M/330 FT Battery Nr.: 395</p>									
241954	I.N.O.X. V	34	7611160185839	Ronda 715	-	37	12.4	18	006311
<p>Case: Stainless steel, rose-gold, Brushed Bezel: Stainless steel, rose-gold, Polished-brushed, Fixed bezel Dial: white, Matt Crystal: Sapphire Case back: Stainless steel, Screw-in caseback Bracelet: Rubber, white, - Closure: Stainless steel, Regular buckle Water resistant to: 10 ATM/100 M/330 FT Battery Nr.: 471</p>									
241955	I.N.O.X. V	33	7611160185846	Ronda 715	-	37	12.4	18	006313
<p>Case: Stainless steel, rose-gold, Brushed Bezel: Stainless steel, rose-gold, Polished-brushed, Fixed bezel Dial: blue, Matt Crystal: Sapphire Case back: Stainless steel, Screw-in caseback Bracelet: Paracord, blue, - Closure: Stainless steel, Regular buckle Water resistant to: 10 ATM/100 M/330 FT Battery Nr.: 471</p>									
241973	AIRBOSS MECHANICAL	71	7611160199874	Sellita SW 200-1	38 h	42	11	22	006019.1
<p>Case: Stainless steel, grey, Grinded Bezel: Stainless steel, grey, Grinded, Bidirectional rotating bezel, Slide Rule Dial: black, Diamond-cut, Military Time 24h Crystal: Sapphire Case back: Stainless steel, Screw-in caseback, See-Through Caseback Bracelet: Leather, brown, - Closure: Stainless steel, Deployant clasp Water resistant to: 10 ATM/100 M/330 FT Battery Nr.: -</p>									
241974	AIRBOSS MECHANICAL	71	7611160199881	Sellita SW 200-1	38 h	42	11	22	005406
<p>Case: Stainless steel, black, Sandblasted Bezel: Stainless steel, black, Sandblasted, Bidirectional rotating bezel, Slide Rule Dial: black, Diamond-cut, Military Time 24h Crystal: Sapphire Case back: Stainless steel, Screw-in caseback, See-Through Caseback Bracelet: Stainless steel, black, Sandblasted Closure: Stainless steel, Deployant clasp Water resistant to: 10 ATM/100 M/330 FT Battery Nr.: -</p>									
241975	Journey 1884	13	7611160229748	Ronda 715	-	43	12.2	21	006499
<p>Case: Stainless Steel, Silver, Brushed Bezel: Stainless Steel, Silver, Polished, Unidirectional rotating bezel Dial: Blue, Grained, Military Time 24H Crystal: Sapphire Case back: Stainless Steel, Screw-in Caseback Bracelet: Rubber, Blue Closure: Stainless Steel, Regular Buckle Water resistant to: 20 ATM/200 M/660 FT Battery Nr.: 371</p>									
241976.1	Journey 1884	13	7611160229762	Ronda 715	-	43	12.2	21	006518
<p>Case: Stainless Steel, Silver, Brushed Bezel: Stainless Steel, Silver, Polished, Unidirectional rotating bezel Dial: Black, Grained, Military Time 24H Crystal: Sapphire Case back: Stainless Steel, Screw-in Caseback Bracelet: Leather, Brown Closure: Stainless Steel, Regular Buckle Water resistant to: 20 ATM/200 M/660 FT Battery Nr.: 371</p>									

Ref	Description	Page	EAN	Movement	Power reserve	Case diameter	Case height	LUG width	Strap/bracelet ref
241978	Journey 1884	13	7611160229786	Ronda 715	-	43	12.2	21	006505
Case: Stainless Steel, Silver, Brushed Bezel: Stainless Steel, Silver, Polished, Unidirectional rotating bezel Dial: Blue, Grainy, Military Time 24H Crystal: Sapphire Case back: Stainless Steel, Screw-in Caseback Bracelet: Stainless Steel, Silver, Polished/Brushed Closure: Stainless Steel, Double-Locking Safety Clasp Water resistant to: 20 ATM/200 M/660 FT Battery Nr.: 371									
241982	Journey 1884	14	7611160229830	Ronda 715	-	43	12.2	21	006503
Case: Stainless Steel, Black, Brushed Bezel: Stainless Steel, Black, Polished, Unidirectional rotating bezel Dial: Black, Grainy, Military Time 24H Crystal: Sapphire Case back: Stainless Steel, Screw-in Caseback Bracelet: Rubber, Black Closure: Stainless Steel, Regular Buckle Water resistant to: 20 ATM/200 M/660 FT Battery Nr.: 371									
242009	Journey 1884	13	7613329172247	Ronda 715	-	43	12.2	21	006505
Case: Stainless Steel, Silver, Brushed Bezel: Stainless Steel, Silver, Polished, Unidirectional rotating bezel Dial: Black, Grainy, Military Time 24H Crystal: Sapphire Case back: Stainless Steel, Screw-in Caseback Bracelet: Stainless Steel, Silver, Polished/Brushed Closure: Stainless Steel, Double-Locking Safety Clasp Water resistant to: 20 ATM/200 M/660 FT Battery Nr.: 371									
241980.1	Journey 1884	17	7611160229816	Sellita SW 200-1	38 h	43	12.35	21	006523
Case: Stainless Steel, Silver, Brushed Bezel: Stainless Steel, Silver, Polished, Unidirectional rotating bezel Dial: Blue, Matt, Military Time 24H Crystal: Sapphire Case back: Stainless Steel, Screw-in Caseback, See-Through Caseback Bracelet: Wood, Brown Closure: Stainless Steel, Deployant Clasp Water resistant to: 20 ATM/200 M/660 FT Battery Nr.: -									
241981	Journey 1884	17	7611160229823	Sellita SW 200-1	38 h	43	12.35	21	006505
Case: Stainless Steel, Silver, Brushed Bezel: Stainless Steel, Silver, Polished, Unidirectional rotating bezel Dial: Black, Matt, Military Time 24H Crystal: Sapphire Case back: Stainless Steel, Screw-in Caseback, See-Through Caseback Bracelet: Stainless Steel, Silver, Polished/Brushed Closure: Stainless Steel, Double-Locking Safety Clasp Water resistant to: 20 ATM/200 M/660 FT Battery Nr.: -									
241983	I.N.O.X.	21	7611160230591	Ronda 5040.E	-	43	13.4	21	006565
Case: Stainless Steel, Silver, Brushed Bezel: Stainless Steel, Silver, Polished/Brushed, Fixed Bezel, Tachymeter Dial: Black, Grainy, Military Time 24H Crystal: Sapphire Case back: Stainless Steel, Screw-In Caseback Bracelet: Rubber, Black Closure: Stainless Steel, Regular Buckle Water resistant to: 20 ATM/200 M/660 FT Battery Nr.: 395									
241984	I.N.O.X.	21	7611160230607	Ronda 5040.E	-	43	13.4	21	006566
Case: Stainless Steel, Silver, Brushed Bezel: Stainless Steel, Silver, Polished/Brushed, Fixed Bezel, Tachymeter Dial: Blue, Grainy, Military Time 24H Crystal: Sapphire Case back: Stainless Steel, Screw-In Caseback Bracelet: Rubber, Blue Closure: Stainless Steel, Regular Buckle Water resistant to: 20 ATM/200 M/660 FT Battery Nr.: 395									
241985	I.N.O.X.	21	7611160230614	Ronda 5040.E	-	43	13.4	21	006505
Case: Stainless Steel, Silver, Brushed Bezel: Stainless Steel, Silver, Polished/Brushed, Fixed Bezel, Tachymeter Dial: Blue, Grainy, Military Time 24H Crystal: Sapphire Case back: Stainless Steel, Screw-In Caseback Bracelet: Stainless Steel, Silver, Polished/Brushed Closure: Stainless Steel, Butterfly Water resistant to: 20 ATM/200 M/660 FT Battery Nr.: 395									
241986	I.N.O.X.	21	7611160230621	Ronda 5040.E	-	43	13.4	21	006567
Case: Stainless Steel, Silver, Brushed Bezel: Stainless Steel, Silver, Polished/Brushed, Fixed Bezel, Tachymeter Dial: Red, Grainy, Military Time 24H Crystal: Sapphire Case back: Stainless Steel, Screw-In Caseback Bracelet: Rubber, Red Closure: Stainless Steel, Regular Buckle Water resistant to: 20 ATM/200 M/660 FT Battery Nr.: 395									
241988.1	I.N.O.X.	23	7611160230652	Ronda 5040.E	-	43	13.4	21	006632
Case: Titanium, Silver, Brushed Bezel: Carbon, Black, Fixed Bezel, Tachymeter Dial: Black, Grainy, Military Time 24H Crystal: Sapphire Case back: Titanium, Screw-In Caseback Bracelet: Wood, Brown Closure: Titanium, Regular Buckle Water resistant to: 20 ATM/200 M/660 FT Battery Nr.: 395									
241989.1	I.N.O.X.	25	7611160230676	Ronda 5040.E	-	43	13.4	21	006571
Case: Carbon, Black Bezel: Carbon, Black, Fixed Bezel, Tachymeter Dial: Black, Grainy, Military Time 24H Crystal: Sapphire Case back: Carbon, Screw-In Caseback Bracelet: Paracord, Black Closure: Stainless Steel, Paracord Closure Water resistant to: 20 ATM/200 M/660 FT Battery Nr.: 395									
241998	Airboss Mechanical	71	7611160217721	Sellita SW 200-1	38 h	42	11	22	005543.1
Case: Stainless Steel, Black, Sandblasted Bezel: Stainless Steel, Black, Sandblasted, Bidirectional rotating bezel, Slide Rule Dial: Blue, Matt, Military Time 24H Crystal: Sapphire Case back: Stainless Steel, Screw-In Caseback, See-Through Caseback Bracelet: Fabric, Blue Closure: Stainless Steel, Deployant Clasp Water resistant to: 10 ATM/100 M/330 FT Battery Nr.: -									
242010	Journey 1884	17	7613329172230	Sellita SW 200-1	38 h	43	12.35	21	006505
Case: Stainless Steel, Silver, Brushed Bezel: Stainless Steel, Silver, Polished, Unidirectional rotating bezel Dial: Blue, Matt, Military Time 24H Crystal: Sapphire Case back: Stainless Steel, Screw-in Caseback, See-Through Caseback Bracelet: Stainless Steel, Silver, Polished/Brushed Closure: Stainless Steel, Deployant Clasp Water resistant to: 20 ATM/200 M/660 FT Battery Nr.: -									
242007	Maverick	83	7611160230577	Ronda 715	-	43	11.4	21	006355
Case: Stainless Steel, Silver, Brushed Bezel: Stainless Steel, Polished, Unidirectional rotating bezel Dial: Blue, Sunray Brushed, Military Time 24H Crystal: Sapphire Case back: Stainless Steel, Screw-in Caseback Bracelet: Stainless Steel, Silver, Polished/Brushed Closure: Stainless Steel, Double-Locking Safety Clasp, Diver Extension Water resistant to: 10 ATM/100 M/330 FT Battery Nr.: 371									
242008	Maverick	83	7611160230560	Ronda 715	-	43	11.4	21	006360
Case: Stainless Steel, Silver, Brushed Bezel: Stainless Steel, Rose Gold, Polished, Unidirectional rotating bezel Dial: Green, Sunray Brushed, Military Time 24H Crystal: Sapphire Case back: Stainless Steel, Screw-in Caseback Bracelet: Stainless Steel, Silver/Rose Gold, Polished/Brushed Closure: Stainless Steel, Double-Locking Safety Clasp, Diver Extension Water resistant to: 10 ATM/100 M/330 FT Battery Nr.: 371									

TECHNICAL SPECIFICATIONS

Ref	Description	Page	EAN	Movement	Power reserve	Case diameter	Case height	LUG width	Strap/bracelet ref
242010	Journey 1884	17	7613329172230	Sellita SW 200-1	38 h	43	12.35	21	006505
<p>Case: Stainless Steel, Silver, Brushed Bezel: Stainless Steel, Silver, Polished, Unidirectional rotating bezel Dial: Blue, Matt, Military Time 24H Crystal: Sapphire Case back: Stainless Steel, Screw-in Caseback, See-Through Caseback Bracelet: Stainless Steel, Silver, Polished/Brushed Closure: Stainless Steel, Deployant Clasp Water resistant to: 20 ATM/200 M/660 FT Battery Nr.: -</p>									
242011	I.N.O.X.	23	7611160237347	Ronda 5040.E	-	43	12.2	21	006568
<p>Case: Titanium, Silver, Brushed Bezel: Carbon, Black, Fixed Bezel, Tachymeter Dial: Black, Grainy, Military Time 24H Crystal: Sapphire Case back: Titanium, Screw-In Caseback Bracelet: Rubber, Black Closure: Titanium, Regular Buckle Water resistant to: 20 ATM/200 M/660 FT Battery Nr.: 395</p>									
242012	Journey 1884	14	7611160247353	Ronda 715	-	43	12.2	21	006505
<p>Case: Stainless Steel, Silver, Brushed Bezel: Stainless Steel, Gold, Polished, Unidirectional rotating bezel Dial: Green, Grainy, Military Time 24H Crystal: Sapphire Case back: Stainless Steel, Screw-in Caseback Bracelet: Stainless Steel, Silver, Polished/Brushed Closure: Stainless Steel, Push-Button Safety Clasp Water resistant to: 20 ATM/200 M/660 FT Battery Nr.: 371</p>									
242013	Journey 1884	14	7611160247360	Ronda 715	-	43	12.2	21	006499
<p>Case: Stainless Steel, Silver, Brushed Bezel: Stainless Steel, Gold, Polished, Unidirectional rotating bezel Dial: Blue, Grainy, Military Time 24H Crystal: Sapphire Case back: Stainless Steel, Screw-in Caseback Bracelet: Rubber, Blue Closure: Stainless Steel, Regular Buckle Water resistant to: 20 ATM/200 M/660 FT Battery Nr.: 371</p>									
242014	Journey 1884	14	7611160247377	Ronda 715	-	43	12.2	21	006501
<p>Case: Stainless Steel, Silver, Brushed Bezel: Stainless Steel, Gold, Polished, Unidirectional rotating bezel Dial: Black, Grainy, Military Time 24H Crystal: Sapphire Case back: Stainless Steel, Screw-in Caseback Bracelet: Rubber, Black Closure: Stainless Steel, Regular Buckle Water resistant to: 20 ATM/200 M/660 FT Battery Nr.: 371</p>									
242015	Journey 1884	17	7611160247384	Sellita SW 200-1	38 h	43	12.4	21	006505
<p>Case: Stainless Steel, Silver, Brushed Bezel: Stainless Steel, Silver, Polished, Unidirectional rotating bezel Dial: Green, Grainy, Military Time 24H Crystal: Sapphire Case back: Stainless Steel, Screw-in Caseback, See-Through Caseback Bracelet: Stainless Steel, Silver, Polished/Brushed Closure: Stainless Steel, Push-Button Safety Clasp Water resistant to: 20 ATM/200 M/660 FT Battery Nr.: -</p>									
242016.1	Journey 1884 Limited Edition	15	7611160247407	Ronda 715	-	43	12.2	21	006573
<p>Case: Stainless Steel, Silver, Brushed Bezel: Stainless Steel, Black, Polished, Unidirectional rotating bezel Dial: Black, Grainy, Military Time 24H Crystal: Sapphire Case back: Stainless Steel, Screw-in Caseback Bracelet: Paracord, Red Closure: Stainless Steel, Regular Buckle Water resistant to: 20 ATM/200 M/660 FT Battery Nr.: 371</p>									





Victorinox AG

Schmiedgasse 57

6438 Ibach-Schwyz

Switzerland

T +41 41 81 81 211

info@victorinox.com

www.victorinox.com



© Victorinox AG 2022

We protect our intellectual property rights.

We reserve our rights for technical modifications.

The product information contained in this catalog was current at the time of printing. Victorinox AG reserves the right to change specifications and designs without notice and without liability for such change.

"Victorinox", the famous Victorinox Cross and Shield, and "Swiss Army" are trademarks owned by Victorinox AG and its affiliates.